



PRESIDENT'S REPORT PG.8

ACCOUNTS PG. 23

RUBBISH COLLECTION DATES PG. 37

Photo: Sally Blyth

SHIFTING SANDS & ERRATIC SKIES 2023

By Sally Blyth

This is a revised version of the article called "Shifting Sands" that appeared in the OBC Newsletter May 2014, covering Omaha's history and the volatility that comes with being a coastal settlement. It has been updated and expanded to include the 2023 weather events and reflect today's environment, almost a decade after the initial article was written.



Stormy skies, 19th April 2023

Sheltered by the surrounding hills which lead down to the harbour, and with its easterly aspect opening directly onto the ocean beach, Omaha enjoys a unique location. Often it has its own micro-climate. Dark clouds and threatening rain can be visible over the hills, and it can be pouring in Matakana and/or Warkworth, yet Omaha can be basking in sunshine and beautifully tranquil.

While pleasant and stable weather has often been the norm at Omaha, the area has endured a number of major storms over the decades since it was developed, including the weather events of 2023 that wreaked havoc with many parts of Auckland and the North Island - and, indeed, right here in Omaha Beach.

Back in the 1970s, Omaha suffered markedly during the significant storms of that decade. It also endured severe weather in September 2013 and then again in March/April 2014 as a

result of cyclones combined with king tides. There was also serious flooding in 2017.



Darroch Reserve April 2017

Such tempestuous weather can change the face of things more than one might expect, so much so that, during the 2023 storms, our dunes got renamed the "White cliffs of Omaha".

OMAHA'S SILVER FOX

FRESH
FEARLESS
FOCUSED

Buying or
selling?
Call me!

Direct, straight
talking, with
an outstanding
career in selling
millions of dollars
of real estate

PRECISION
REAL ESTATE MREINZ

PRECISE PROFESSIONAL REAL ESTATE WITH INTEGRITY
Precision Real Estate Limited MREINZ 09 489 1189 (Licensed - REAA 2008)

DI BALICH

021 917 080 | dibalich.co.nz

Let's take a look at the history of the Omaha environment, its volatility and the stabilisation measures that have been put in place through the years.



Walkway 10, April 2017

But first, it's important to understand the factors that influence potential damage in storm situations. These are: tide status; barometric pressure; wind direction and strength; and swell. The combination of high tide, low pressure (which raises the tide level), strong winds from the east through north and large swells is not a good one.

A BRIEF HISTORY

When Omaha was first developed in the early 1970s, a timber retaining wall was erected along the developed (middle) part of the beachfront, using high density tanned pine. Its purpose was to reduce erosion and restrict access to defined points of entry, where steps led down to the beach at the end of the walkways. The wall also served to give more elevation as the foreshore behind it was reshaped to be level with the top of the wall.



Omaha Beach, early 1970s, with the wall in place

Despite this, the dunes behind the wall, which had been planted with marram grass, began to slowly erode. Cavities began to appear behind the wall as the sand eroded and the problems became quite serious towards the end of 1975 as the gradual undermining of the beach wall worsened through the natural processes of weather and tide.

In April 1976 a major storm, with strong easterly winds, caused extensive and critical

erosion. The result was that the land and sand immediately behind the wall was gouged away, leaving the wall itself standing alone. This situation caused havoc with beach access in the following months, and it looked unsightly. There was also the unanswered question of how much more erosion might occur as the years went on. Market appeal and buyer confidence understandably took a dive, and those were anxious days for people who owned property at Omaha, especially sections along the beachfront.



Erosion behind the wall

During another major storm just over two years later, on 19th July 1978 to be precise, strong north-easterly winds combined with an exceptionally high tide and the wall was smashed to bits. It was almost completely demolished except for the huge posts that remained standing. Locals watched in horror as the huge waves crashed and bashed the wall into matchwood.

This storm of '78 not only destroyed the wall, but it eroded the foreshore right back into private property. The expensive beachfront sections were effectively erased off the map. At that time, only one house had been built right on the beachfront, and, with its foundations undermined, it sat alone on its own little island. It was ultimately relocated to higher ground in Darroch Slope.



Little of the wall was left standing

Below you can see the extent of the erosion and the remains of the wall, far left centre, with the beachfront house that would eventually be relocated - 1978.



The last of the timber from the wall was duly removed and protection plans for the beach were hastily approved in October 1978, to enable three groynes to be constructed; a major engineering project. No one had seen this amount of damage and destruction coming, but it had helped that some preparatory work had been done in this direction following the 1976 storm and the subsequent gradual erosion.

OVERCOMING THE PROBLEM

Despite knowing that the Omaha foreshore was susceptible to erosion from storms and high tides, the developers had nevertheless gone ahead with the subdivision of the land. Now they had serious problems to overcome.

The original Omaha sales brochure states: *"Care in planning extends right down to the waterline. A costly programme of total foreshore protection is already under way to maintain the ocean beach in the finest possible state. An Australian expert was called in to design a protective system for the wide sweep of the ocean beach. It will retain the sand dunes which safeguard the properties."*

As we now know, this was all rather misguided. There was some compensation offered to those who lost their expensive beachfront sections, but not before some long-drawnout legal battles to get the sorry situation sorted. Tampering with nature can indeed be a costly and unpredictable business.

Beca Carter Hollings & Ferner Ltd were contracted to build the groynes and work began in January 1979. These huge structures are still in place today - giant rock walls jutting out to sea at the northern end of the beach. At the same time, the seaward side of the beach was filled using 400,000m³ of sand dredged from the Whangateau Harbour during the winter of 1979. Work went on for most of the year and was completed in November 1979.

Alongside this work, a wave run up barrier was constructed in front of the sub-division, running from the Surf Club as far along the beach as the last beachfront section to the north of Success Court. This was an extra measure that the engineers hoped would solve the erosion problems once and for all. It remains in place to this day, silently doing its duty.



Omaha 1982

OMAHA'S LEGENDARY SURF BAR

Prior to the development of Omaha, those wanting to surf the bar could only access it by boat, paddling from Ti Point, or through the private land that ultimately became Omaha, so the waves were reserved for the most intrepid. Pakiri and Daniel's Reef were more accessible options at that time.



Omaha Spit prior to development

By all accounts, the surf in those days was similar to what it is today. However, during the 1970s, one upshot from the initial development and human interference was the creation of one of the best surf bars in the business with Omaha's surf becoming notorious during the mid 1970s. Keen surfers came from all over to experience the swells that the Omaha bar (also known as the Ti Point Bar) generated.

Between 1942 and 1963 more than 380,000m³ was dredged from outside the harbour entrance, near Ti Point. This was the likely cause of steady erosion of the spit during the 1960s. In the early 1970s, a resulting change in the ebb current coming from Whangateau Harbour led to a



Surfing Omaha's bar, mid-1970s

substantial loss of sand from the tip of the spit. Between 1966 and 1976 it is estimated that 150,000m³ was lost from the tip, 200,000m³ from the foredunes and up to 1,000,000m³ from the beach itself. One aspect of all this change in currents was the creation of an eddy near the harbour entrance where sand was deposited into a bar that surfers grew to love. This was all around the time that Omaha was opened up for development. The fame of the waves quickly spread and it became a surfing hotspot, especially during big easterly swells. However, this legendary surf break was to have only a short life span, due to shifting sands, further human intervention and the changing environment.

It's ironic that human interference (dredging the harbour entrance) created the amazing surf break, yet it was also human interference (building the groynes) that led to its demise. The building of the groynes kept the erosion at bay, but the legendary Ti Point bar was diminished. Today Omaha can produce some good surf swells with the right conditions but word is that they are a mere shadow of those that kept surfers happy during the mid to late 1970s.

PRESERVATION FOR THE FUTURE

Omaha's protected sand dunes and the beach's usual gentle camber down to the water's edge meant it was hard to imagine there was ever a wall on the beach at all, much less that it was high enough to require about ten steps leading down to the sand. The walkways today take you straight onto the beach. In fact, sand from the beach encroaches back up the walkways, but this in effect creates an extra stabilisation measure - if the sand that filters back onto the paths was dug out and removed, this could create a potential weak point. It would also be a relentless exercise to clear all the sand away and the reality is that it would just keep returning and fill in again, due to nature.

The dune system has helped to stabilise the sands although damage was suffered during storms in the 2010s, with wave run-up

reaching the dunes, depositing debris and kelp. Fortunately, there was little significant dune erosion back then, and the waves did not penetrate into the walkways or dislodge vegetation, although some of the "private access paths" through them showed wave run-up and possible erosion. The 2014 storms saw the king tides come within less than a metre of the dunes, and damage was minimised by the fact there was high barometric pressure, and minimal wind.



The "White Cliffs" of Omaha, 15th February 2023

There was also significant flooding for residents to contend with, although some of the stormwater works undertaken more recently helped to mitigate some of the risk. A number of the reserves were badly flooded, remaining full of dark stagnant water for a long period as there was little let up of rain throughout the majority of the summer and autumn months and pumps put in place couldn't cope. This has been an ongoing problem through the decades, but this year was worse than ever. Whilst constant pumping helped to some extent, it was neither ideal nor efficient and a better long-term solution was required to alleviate the

problem. The new sump and pipes installed in September to pump water from the Darroch Reserve has mitigated the problem to some extent. (See page 14)

The main groyne suffered some damage during the 2014 storms, with rocks being washed off the top. The Council did some repair work back then but it wasn't very successful as subsequent rough seas resulted in more holes and rocks being washed back onto the sand and further significant repair work was done in 2022.



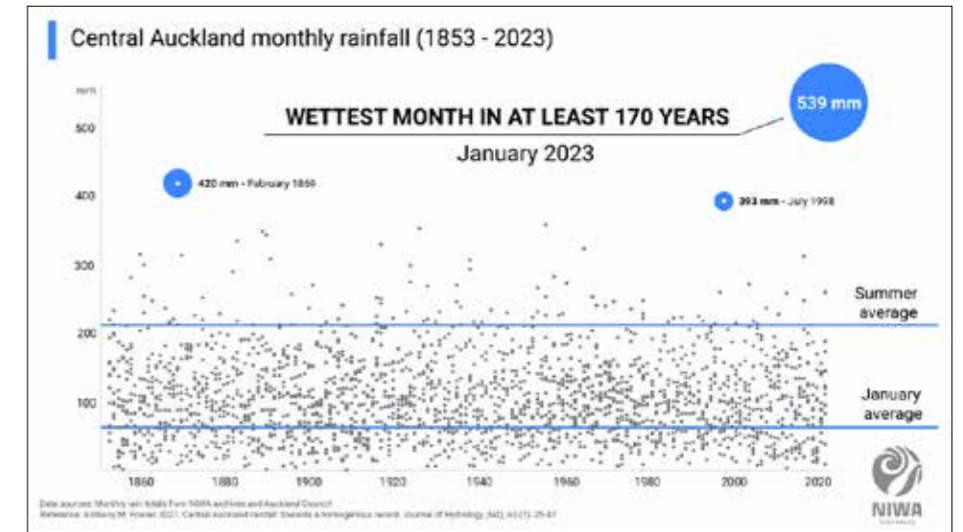
Groyne: Top - Storms on 20th April 2014 and just prior to lockdown on 15th March 2020

PLEASE RESPECT OUR DUNES

The dunes are the only barrier between the sea and our properties and are an incredibly important component in maintaining the beach's structure and stability. Over the years there have been several near breaches, and this year the dunes got hammered.

It is up to us all to continue to protect the environment by staying off the dunes. Those signs asking people to keep off the dunes are not trying to spoil anyone's fun and do not state their message lightly. They are requesting respect for a beach that has been through some turmoil in its time and continues to do its best to recover.

Keeping the dunes pristine and leaving them alone is vitally important for the future stability of Omaha Beach, so please heed those "keep off" signs, no matter how tempted you may be to skip across the dunes or take a short cut. Or, as has occurred recently, have a beach party within the dunes themselves. This is a huge no-no and measures have been taken to stop



this practice. People who have carved a pathway to the beach for easy access are also contributing to the failure of the dune structure and we ask that you please don't do this and stick to the official walkways.



2022/2023 - THE WORST SUMMER EVER!

During January 2023, Auckland and the upper North Island experienced relentless maritime heatwave conditions caused by the annual La Niña cycle with heavy rain falling across the northern and eastern areas of the country.

And then, on 27th January 2023, came a major flooding event which brought heavy rainfall and serious flash flooding across the Auckland region as Anniversary Weekend began. NIWA reported that an entire summer's worth of rain fell within one day, which it described as a "1-in-200-year event". A local state of emergency was declared in Auckland and four people lost their lives.

Auckland's aging stormwater infrastructure systems was unable to cope and road surfaces, carparks and buildings exacerbated water pooling and surfaces flooding. It was chaos right across the city and everyone was in a state of shock and disbelief.

There had been significant flooding events in Auckland in August 2021 and March 2022, but 27th January 2023 was declared the wettest day in Auckland on record with 258mm recorded at Auckland Airport (previous record 161.8mm). MOTAT had 238.4mm of rain that day, Albany recorded 260.6mm

and Māngere 265mm. Albert Park copped 299.5mm over a 34-hour period.

Auckland received over 45% of its yearly rainfall (1190mm) in January and total rainfall for the month was more than twice the previous record for the month. Some parts of the city had over 400mm of rain within a week. This was considered to be the worst flooding in Auckland's modern history. In fact, NIWA declared the month of January to be the wettest month ever in central Auckland - the total of 539mm surpassed the 420mm recorded way back in February 1869.

A tropical "atmospheric river" carrying a long band of rain and thunderstorms was stationed over the upper North Island, blocked by a large anticyclone to the southeast of NZ, and it moved through the upper North Island at the end of January. Areas of Auckland were again in chaos during the early hours of 1st February after more heavy downpours. There were landslides and widespread flooding. The extreme amount of water in the soil increased the risk of landslides and slips in and around Auckland.



Flooding Darroch Reserve/Walkway 10, 15th February 2023

More flooding occurred in Auckland and Northland on 24th February as rainstorms struck yet again. Weather warnings were issued for Coromandel Peninsula, Auckland and Northland.



Left: 5th March 2023. Right: 12th April 2023

But we weren't out of the woods yet - another significant flooding event occurred a few months later on Tuesday 9th May, resulting in one death. Many roads were closed including SH1 at Brynderwyn, the Dome Valley and Puhoi. There were many power outages, sometimes for lengthy periods and, whilst Omaha is susceptible to power cuts, these were much more impacting.

Ultimately, Gisborne and Hawkes Bay areas were worse off than Auckland and Northland, and we can only be thankful that most properties - and all people - in Omaha survived the turmoil. Some properties did suffer damage and we feel for those who had to wrangle with the aftermath of ruination and reparation.

"The Omaha Spirit" was alive and well as the community rallied around each other, with the Community Centre available for those affected or wishing to get together and process things. We'll be better prepared for any future weather events, but let's hope the scale and relentlessness we witnessed this year are confined to 2023 and relegated to history!

WHAT WEATHER CAN WE EXPECT FOR THE SUMMER?

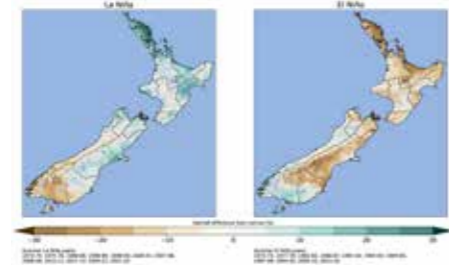
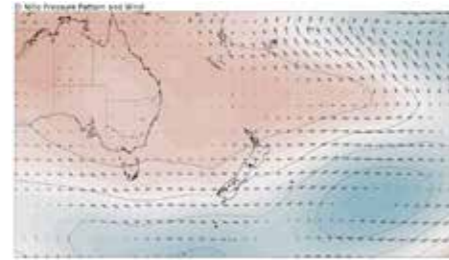
In summary, 2022/23 was an exceptionally wet summer and the whole year has seen constant and, at times, relentless rainfall. So, what can we expect for the summer?

The El Niño weather pattern - where trade winds weaken or even reverse, blowing warm water from the western Pacific toward the east - was prevalent in October and November. According to NIWA it is likely to intensify through to January and persist through the autumn. Rainfall is most likely to be below normal in the north and east of the North Island, with prolonged dry spells possible in several regions. Temperatures are most likely to be above average in our area, with above normal seasonal wind strength

for much of the country. Localised marine heatwaves may form in northern and eastern coastal areas in the months ahead.

During El Niño, New Zealand tends to experience stronger or more frequent winds from the west in summer, which can encourage dryness in eastern areas and more rain in the west. In autumn, south-westerly winds are more common.

There is no such thing as an "average" El Niño and each pattern comes with a unique set of climate characteristics. We will find out soon enough what it brings to our special part of NZ as 2023 comes to a close and 2024 unfolds.



Summer rainfall during La Niña and El Niño

A SPECIAL COASTAL ENVIRONMENT

The sands at Omaha are always shifting, the beach never stays the same, and that's what makes Omaha so magical. Further excessive change or erosion is not wanted and, whilst we can't control the weather, we can all work to ensure the dunes are respected to keep the beach stable.

Omaha Beach is not only a stunning piece of nature, which has been much misunderstood, and indeed much maligned, over the years - it also has an extraordinary story to tell and, as long as we all play our part, a bright future.

May "The Omaha Spirit" continue to flourish!

Acknowledgements: Silverback Surfers, Luke Williamson, Halcyon Design Ltd, as well as various locals and historical material (May 2014 edition); NIWA <https://niwa.co.nz/> and Wikipedia



The "Spirit of Adventure" in the bay on a calm winter's day, 17th July 2023

The next part of this article is included with acknowledgement to Hamish Aitcheson of Bayleys, Omaha. A long-time local, he researched the following piece with the help of the Alexander Turnbull Library (and other internet sources). It reiterates what we've shared

By Hamish Aitcheson

Following the disastrous storms of the late 1970's, Dutch engineer Professor Raudkieve was brought out to New Zealand to help solve the problem of erosion around the now destroyed seawall. He recommended the groynes as well as rocks along the foreshore from where the Omaha Surf Club is now located to about the end of Day Dawn Slope (the end of stage three). For eight months a dredge worked in the inner harbour removing the sand that had been deposited there.

There followed many months, even years, of grief as the developers, the Rodney District Council and the property owners struggled for solutions. It took Omaha five years to get its dignity back, and some people choosing not to admit they had property at Omaha - a far cry from the aspirational address that Omaha enjoys today!

The main issue was the millions of dollars it was going to cost to solve the problem and only a few hundred ratepayers. Omaha and some parts of Whangateau were deemed "areas of benefit" - Whangateau was also suffering from flooding problems.

A group was formed to take legal action against the council and Broadlands and they won. The 'area of benefit' designation was withdrawn. The development was stopped at that point of 390 sections and construction of the rock groyne began. The ratepayer's association's relationship with these parties was still good, but things soon began to deteriorate. There was the issue



of no sewerage scheme and that needed to be resolved. Sewerage was pumped down to holding tanks on the golf course, then trucked away via a local contractor, his truck emblazoned "Pete's takeaways". In the same milk tanker trucks he used to deliver water, the service called "Pete's refreshments", and locals always hoped the trucks never got mixed up!

Initially, the 'takeaways' were spread on the southern end of Omaha, then called Mangatawhiri Farm. This was no longer acceptable, so the council then proposed a sea outfall which was not acceptable. Then there was talk of relocating the old treatment plant from Red Beach to the Omaha entrance area by Broadlands Drive and between the two golf courses. That would be turned into wetlands with rushes growing in the effluent. That was unacceptable, then the council suggested 100 acres of land up Jones Road.

The Omaha ratepayers were levied a sewerage scheme fund in the event of having to fund an alternative scheme but eventually the developers and the council provided the scheme which was officially opened in 1989. The Omaha people had already been levied to pay for the straightening and sealing of the road from the new vineyard at Takatu corner to the Omaha Flats Road turnoff and then they were further levied to pay for the sealing right into the development. The council wouldn't pay for that particularly sharp corner that saw many cars crash before it was finally straightened in about 1999.

Then there was the issue of bore water that was being used for the Omaha development and the golf course. Each section was reticulated for water which had to "kick in" after the water tank was less than one-third empty but that system was a disaster. More than 80 per cent of the pipes leaked and the water turned foul through lack of use. That system was disconnected in about 1989 and every home now relies on roof collection for its water.

The golf course was purchased for \$150,000, the Community Centre cost \$500,000 to build, the number of tennis courts was increased from two to four and soon after the bowling club was also built.

The developers, Challenge (from Fletcher Challenge) which had taken over from Broadlands, at this time finished their association with Omaha and the undeveloped northern tip of Omaha was sold to Alastair Dryden.

It wasn't until the late 1980s that section prices began to increase significantly with a section in Meiklejohn Way initially purchased for \$5,600 now valued at \$50,000. By 2015 the average price of a property in Omaha had increased to \$1.3m. Some recent figures show an average sale price in Omaha had risen \$3.450m underpinning the value of investing in this beautiful part of the country.



Photo Credits: Alexander Turnbull Library

PREMIUM[®]

The Leader In Selling Fine New Zealand Homes Since 1984.

Locally Focused with a Global Reach

PREMIUM.CO.NZ

Talk to your Local Team

about how to achieve the best result for you.

Linda Smith
021 470 175

Rob Matulich
021 634 059

Julia Lewis
027 374 4249

Sue Harden
021 926 920

Sheryl Campbell
021 285 0402

Gail Van Reemst
021 767 273

09 422 9280 | 9 Matakana Valley Road | omaha@premium.co.nz
PREMIUM REAL ESTATE LTD LICENSED REAA 2008

Greetings to fellow Omaharians and visitors,

I pulled out a copy of the "Summer 2013" Newsletter to muse over issues as they were reported 10 years ago. The then Omaha Beach Community Inc. President Graham Painter began his report:

"A dry winter behind us and it looks like we are in for a long hot summer. It has been a busy year for your committee. While we have developed excellent relationships with key Auckland council officers, their weight of bureaucracy continues to create a ridiculous quantity of paperwork or any project with multiple departments and their representatives involved."

The only difference between the issues commented on in that opening paragraph and 10 years later on is the weather. Hopefully we will have a long hot summer in 2023/24.

Issues covered in Graham Painter's 2013 Report - and a comparison with today - were:

Maintenance - Graham commented that mowing on Council areas has again been a dog's breakfast. This seems to no longer be a problem at Omaha although in some areas the grass is mowed to within an inch of its life but, by and large, the mowing contractors are doing a great job.

Dogs - He says we are then bedevilled by a minority spoiling it for the majority. He further stated in simple terms "please pick up your dog crap and don't leave it for someone else". No change here.

Boat Ramp - A boat ramp study was initiated. This was an earlier version of consultation. No changes, although attempts have been made to prevent cars without trailers parking in the immediate carpark.

Stormwater Flooding - Comments were more in relation to flood plain or flood prone areas. This was not in the context of dealing with flooding but dealing with Auckland Council's maps. Some of you will have accessed the Council's website which has updated flood plain or flood prone areas at Omaha. It's worth having a look at.

Rubbish Collection - Graham commented that the community needed to be fully aware of the dates and procedures for rubbish collecting and recycling as outlined in that newsletter. The same comments apply in 2023, however we now have additional collections. (See page 37 - and the separate

calendar to go on your fridge with the Rhodes for Roads magnet).

Community Participation - Graham commented on changing demographics and an increase in permanent population and the need for community participation and for people to contact the OBC Committee to see how they could participate and assist.

2023 these issues remain the same.

Our Newsletter editor Sally Blyth took on the role back in 2013 - and, like some of the issues that remain, she is still with us ten years later. We are a sustainable and enjoyable community to be a part of - and more stable than government!

What is happening in 2023 is that your OBC Committee is continually addressing and challenging Auckland Council, its representatives and its officers because if the Council doesn't know what the community's concerns are, then nothing will happen. We have asked the community to report stuff firstly on the Council's complaint website and to advise the OBC through OBC's email us@omahabeach.co.nz.

- Electronic speed sign on causeway.
- New community sign at roundabout.
- Three new wooden walkways at the northern end (walkways 2, 3 and 4).
- New concrete bike / walkway from Blue Bell Parade to William Fraser Reserve.
- 1000 spinifex plants for dune planting by walkway 3.
- New number signs on northern beach walkways.
- William Fraser Reserve changing and toilet facilities.
- Pump installation in Darroch Slope reserve to mitigate flooding in nearby properties and remove flood water.
- Boat ramp sign replacement.
- 800 native plants planted at the Quarry reserve.
- Support for trapping teams in Omaha generally and Omaha Shorebirds.
- Repairs to the causeway following Cyclone Gabrielle.
- Continued additional Recycling collections over the peak summer period, and also additional Rubbish Collections, with thanks to Northland Waste.
- Supported the Community Centre with applications by the Golf Club (GC) to:
 - Construct baffles and fans to soundproof and improve heating and cooling of the Community Centre (including contributing \$ to purchase

the heat pumps).

- Acquire and install a new and substantial water tank in the leased area.
 - Responding to the latest request by the GC to install a new deep fryer.
- This involvement is because the OBC is the lessee and the Auckland Council is the landowner of the Community Centre, with the GC as manager of the building and the lease requires landowner approvals for these sorts of alterations or replacements.

Omaha is no longer considered the wild west, as some would have it, and go off and do things because it is a good idea!

The terms of the lease at the Community Centre remains unresolved. A reminder that the Rodney Local Board granted OBC a 10 by 10 by 10-year lease at a peppercorn rental. Graham's comment about the weight of "bureaucracy" is a continuing issue.

I want to thank all of our OBC Committee members for their time and effort in engaging with whomever in respect of all matters of interest throughout Omaha.

Wishing you all a Merry Christmas and happy Summer!

Chris Allan, OBC President



OBC COMMITTEE MEMBERS 2023 - "Working for the Omaha Beach Community":

Chris Allan (President),
Rohan Meuli (Treasurer),
Rob Zubielevitch (Executive Officer),
Murray Beatson,
Terry Brailsford, Paul King,
Rob Macready, Paul Head,
Sally Blyth, Simon Martin.

Here we share information about how we can be prepared and keep safe should an unexpected event occur here in Omaha Beach. By Rob Macready

BEING PREPARED

NEIGHBOURHOOD SUPPORT

Over the past 18 months, Auckland Council and Auckland Emergency Management have been developing templates for regional groups to formulate a plan for community response to major events such as floods, earthquakes, tsunami threats, fires, etc.

As a part of this, the establishment of Neighbourhood Support networks in Omaha has been a project that Tanya Svendsen has taken on. Similar to the old Neighbourhood Watch scheme (but without the nosey neighbour connotations), the Neighbourhood Support is about getting to know your neighbours, developing communities and being in a position to help others should the need arise.

For more information on Neighbourhood Support, contact Tanya via omahanorth.rns@gmail.com or on 021 677 744.

What to do in an emergency

In an emergency or disaster situation, you'll need to know how to get important information and how to connect with people around you in your community. Omaha Beach's relative isolation in terms of power supply, communications, having just one road in and out, being relatively low lying and our distance from a main settlement, mean we may have to look after ourselves in the initial stages of an emergency.

The recent decision by Auckland Council and Auckland Emergency Management to deactivate and decommission the tsunami siren network (mainly due to the repeated theft of sirens) reinforces the need to talk to our neighbours. (See the Tsunami Alert Update following).

Auckland Emergency Management (AEM) have suggested individuals, families and communities work on these priorities so that, when an emergency occurs, we are all well aware and better prepared.

PLANNING FOR DISASTER RESILIENCE IN YOUR COMMUNITY

When a disaster strikes, it is often community members who are the first to respond and

offer assistance. Practical help for people in need comes mostly from neighbours, whānau and friends living nearby or existing local community groups, faith-based organisations and volunteer organisations, such as Neighbourhood Support, Lions, Rotary, Salvation Army, Residents Association or sports clubs. Further assistance can come from social or interest groups you identify with or belong to.

The agencies that respond to the emergency, such as Fire and Emergency New Zealand, Police, Ambulance, and Auckland Emergency Management (who coordinate reduction, readiness, response and recovery activities across Auckland) are better able to prioritise their disaster response work if communities also act for themselves and others. We need to work together for the safety and wellbeing of all.

No one knows your community better than you and the people in it. Auckland Emergency Management encourages all communities to come together and talk about how to get ready and plan what you will do during an emergency.

COMMUNICATIONS

One of the major issues affecting Omaha during the cyclone and floods was with communications being cut off when the mobile network lost power. This made even talking to locals a task, involving driving to each other's homes. Communicating beyond Omaha was limited to UHF/VHF radio.

To resolve this issue, the OBC are in the process of purchasing two-way VHF radios and base stations via Amateur Radio Emergency Communications (AREC) for community use if required. AREC is a volunteer organisation sitting under the New Zealand Association of Radio Transmitters. AREC support the New Zealand Police, the Rescue Coordination Centre NZ (Search and Rescue coordinating authorities), Land Search and Rescue (LandSAR), Coast Guard, and Surf Life Saving. They keep the essential communication lines open during natural disaster events, helping bring home the lost and missing.

The OBC worked closely with the Omaha Beach Golf Club to have a generator ready to power the Community Centre during Cyclone Gabrielle. By having a power source available, the water pump, toilets, lighting and limited cooking facilities were available for those displaced by the weather. Nationwide we

are aware of many people having invested in generators as a backup for their homes in these situations. There are a variety of options available, and we recommend that you do your research before committing to a purchase to ensure you are buying what is relevant to your needs.

The OBC Committee will be compiling a Community Response document in the first quarter of 2024 in line with the template provided by Auckland Emergency Management which, once completed, will be on the Community website. Meanwhile, we encourage you to put your own plan in place.

MAKE YOUR PLAN

The summer holiday period, when many owners are around, is a good time to connect with your neighbours so you'll be ready if an emergency situation occurs. It also makes everyday life much more enjoyable! It's by doing things together that communities begin to thrive, adapt and get stronger. Here are some things you can do in preparation:

- Share contact details with your neighbours so you can contact one another if an emergency occurs.
- Tell your neighbours about your emergency plan and ask about their plans.
- Find out who amongst your neighbours may be able to help you or may need your help in a disaster.
- Create a network with at least three other people where you will let each other know that a Civil Defence alert has been issued.
- Get involved in your community's events.

More information is available at www.aucklandemergencymanagement.org.nz

TSUNAMI ALERT UPDATE

TSUNAMI SIREN NETWORK DEACTIVATION AND DECOMMISSIONING

Auckland Emergency Management has confirmed that the majority of Auckland's tsunami warning sirens will be deactivated from 1st December 2023 and decommissioned, with the Emergency Mobile Alert the preferred method of notifying the public about dangerous tsunami threats.

In the event of a potential tsunami that could cause damaging waves or flood the land, an Emergency Mobile Alert will be broadcast to all capable mobile phones. This is an effective and reliable means of alerting people to danger, including a tsunami threat.



Ten tsunami sirens were installed in Rodney Ward: six in Omaha, three in Point Wells and one in Whangateau.

The siren network across Auckland has been subject to ongoing theft and vandalism meaning it has not been operating the way it was intended.

Based on a number of factors, including a change in technology and national alerting methods in 2017 (to Emergency Mobile Alerts), ongoing maintenance, theft and vandalism issues, the sirens approaching their end-of-design-life, and new tsunami evacuation mapping to be released later this year, the Civil Defence and Emergency Management Committee decided to decommission the siren network (excludes Orewa). The sirens in Orewa were installed in 2020 and have not been impacted by vandalism or thefts and they will not be deactivated or decommissioned.

Decommissioning of the network, effective 1st December 2023, will entail the removal of all horns and hardware.

STAY INFORMED AND BE PREPARED

In the event of a tsunami, you will receive warnings through official channels including the Emergency Mobile Alert platform (messages to your mobile phone), radio and television news broadcasts, social media and the Auckland Emergency Management website and social media pages.

There are also a number of natural warnings you can look out for. If you are near a shore and experience any of the following, take action. Do not wait for official warnings.

- Feel a strong earthquake that makes it hard to stand or a long earthquake that lasts more than a minute.
- See a sudden rise or fall in sea level.

- Hear loud or unusual noises from the sea.
- You can find out further information about Emergency Mobile Alerts via getready.govt.nz/prepared/stay-informed/emergency-mobile-alert/.
- Follow us on X (Twitter) (@AucklandCEM) and Facebook.

REMEMBER:

If you are at the coast and feel an earthquake which is **LONG or STRONG, GET GONE** and move inland or to higher ground.



To find out more about tsunami, warnings and other hazards, or to check if you live in a tsunami evacuation zone in Auckland's Hazards Viewer, please visit the Auckland Emergency Management website aucklandemergencymanagement.org.nz.

Should you have any questions please email aeminfo@aucklandcouncil.govt.nz.

AEDS IN OMAHA (AUTOMATED EXTERNAL DEFIBRILLATORS)

There are three AEDs in Omaha - please make sure you are aware of where your nearest unit is located. There is also an AED at the Point Wells General Store and in Matakana.

- Omaha Surf Club, 57 Broadlands Drive (Central)
- Omaha Southern Surf Club Tower - access via Pukemateko Reserve (South)
- Omaha Golf Club, 1 North West Anchorage (North)

Find out all you need to know here: <https://aedlocations.co.nz>

Visit the St John's website for more information, including a video about how to use an AED. www.stjohn.org.nz/First-Aid/AED

WILDFIRE READINESS AND PREVENTION

No fires or fireworks on the beach.

Please take note of this information from Fire and Emergency NZ.

WILDFIRE READINESS AND PREVENTION
2023 — 2024

Before you light, always check the local fire danger level at checkitsairright.nz

Approximately **3%** of wildfires develop into large scale events

98% of wildfires are caused by people in New Zealand

Annually there are **4,500** wildfires in New Zealand (based on 5-year average)

Scale: LOW, MODERATE, HIGH, VERY HIGH, EXTREME

CHRISTMAS MESSAGE FROM: COUNCILLOR GREG SAYERS

Season's greetings and wishing you a very happy holiday enjoying all the wonderful amenities Omaha has to offer.



It has again been a pleasure working with the OBC committee this year. They have achieved many wins which are detailed within this Summer Newsletter.

However, it hasn't all been smooth sailing with Auckland Council. This was highlighted by the fiasco over the community lease of the Omaha Beach Community Centre, which is proving difficult to resolve despite significant effort and energy from OBC President Chris Allen and the OBC team. Again, this is covered further in this Newsletter.

On a more general topic, a significant amount of spending of ratepayers' money is with Auckland Transport and, with that, many residents and ratepayers' frustrations are related to Auckland Transport issues. The general elections provided an opportunity for the Mayor of Auckland, with support from his Councillors, to challenge the set-up of the Council Controlled Organisation model and an effort to wrestle more control into the hands of the Auckland ratepayer.

Mayor Wayne Brown and Council's Governing Body unanimously voted that the Council support legislation to fix the governance of Auckland's transport system, including taking the initiative to promote a local bill.

There is a strong sentiment in Auckland that Aucklanders do not have enough influence on the decisions made about their transport system. Too many things we spend money on are dictated to us, and much time is wasted on mega projects imposed by Wellington rather than the smaller-scale initiatives that would really help Aucklanders.

Transport accounts for more than 30% of Auckland Council's budget. Despite this, Auckland Council is the only council in New Zealand that does not have a formal role in preparing and approving the strategic direction for transport and the allocation of funding to support that direction.

The proposed bill establishes a legislative basis for Auckland Council and the Crown to agree to an Auckland Integrated Transport Plan providing more integrated and efficient

planning and funding related decisions.

For Omaha this would mean a better chance to have our say on how our local rates are spent on transport related issues, rather than that being dictated to us, or having Omaha completely overlooked. The new government now must decide if it will drive this change through.

The extreme weather events led to some Aucklanders experiencing financial hardship and having lost the use of their home. During a debate on Cyclone Gabrielle I challenged a report by Council officers for limited assistance for families impacted by the storm. Instead, I put forward an Amendment for Auckland Council to give 100% rates relief to "red stickered" properties that became uninhabitable due to the severe weather event. Pleasingly, this passed and was a significant win for those families experiencing acute financial hardship. I was delighted the Amendment was backed by the Mayor and other Councillors. It was the right thing to do.

My working relationship with the Mayor and the Rodney Local Board remains very positive. Part of my role was to proactively support the OBC by organising the opportunity for them to meet the Mayor earlier this year to establish a direct relationship with him. Hopefully this will help in enabling Omaha's voice to continue being heard.

In closing, I would again like to wish you and your family a very Merry Christmas, a happy New Year, and a safe and enjoyable summer holiday.

Cr. Greg Sayers, Rodney Ward Councillor, Auckland Council

Phone: 021 285 9900

Email: greg.sayers@aucklandcouncil.govt.nz

www.facebook.com/gregsayersnz

<https://gregsayers.co.nz>

UPDATE FROM: IVAN WAGSTAFF - RODNEY LOCAL BOARD

A year ago, I stepped into my role on the Rodney Local Board and, as a local resident, I was eager to grasp the ropes and get stuck in. From the get-go, it was a learning curve, getting acquainted with the processes and meeting with many great people in our community.



As I settled into my role, January/February brought the weather events that posed a significant challenge to many in our communities, including Omaha. It was a situation that required quick adaptation and collective effort. There was not a great initial response from the Council and together our communities all rallied, showcasing the resilience that characterises Rodney.

This experience helped me to identify the areas where our community could grow stronger and more cohesive. With a better understanding of our community's needs and strengths, I then started working with the Board and communities to develop a plan for the next three years.

We aimed for a plan focused on enhancing connectivity and inclusivity within the community. We envisioned creating spaces that are welcoming and accessible, fostering a culture of collaboration and mutual support. We are seeking to empower individuals in neighbourhoods like Omaha and to foster a sense of security and readiness for any future challenges that might come our way.

Our plan outlines objectives and key initiatives that will guide us over the next three years. We aim to develop facilities and services that cater to a diverse range of needs, nurturing a sense of community and belonging. We are also focused on enhancing the resilience of our local businesses, creating opportunities for growth and prosperity within Rodney.

As we move forward, I am eager to see this plan unfold, confident that it reflects the practical and resilient spirit of our community. Together, we will work to create a Rodney that celebrates its unique culture while embracing opportunities for growth and development.

OUR PEOPLE, OUR COMMUNITY: A THREE-YEAR SNAPSHOT

Our Community

- Objectives: Cultivate a place where people have a strong sense of connection, feeling included and eager to participate in community life.
- Key Initiatives: Enhance opportunities for neighbours and communities to forge stronger connections at a local level; foster inclusive, accessible, and welcoming local spaces.

Our Places

- Objectives: Develop vibrant, well-planned

communal spaces reflecting our local heritage and culture; ensure our growth is marked by quality infrastructure.

- Key Initiatives: Encourage community involvement in the development of public spaces; support and collaborate on community projects and activities.

Our People

- Objectives: Develop a community where people are empowered to lead and effect change, fostering resilience, sustainability, and adaptability to change.
- Key Initiatives: Offer learning opportunities that nurture community leadership and innovation; empower communities to prepare for emergencies, developing local leadership groups and action plans.

Advocacy

- Work towards garnering increased resources from the central government to bolster community resilience during emergencies and to foster capacity building and training for community groups and volunteers.

With a view to the future, I am looking forward to seeing our collective vision come to life, confident that our plan mirrors the spirit and unity of your Omaha community.

Ivan Wagstaff, Elected Member

Rodney Local Board, Auckland Council

Phone: 027 334 1317

Email: Ivan.Wagstaff@aucklandcouncil.govt.nz

Visit Auckland Council's website:

www.aucklandcouncil.govt.nz

UPDATE ON ROADING, WALKWAYS AND RESERVES

By Rohan Meuli

As covered elsewhere in the Newsletter, the major story around the greater Auckland area this year has of course been the storms in the first couple of months. While Omaha seemed to get off relatively well, the storms have affected maintenance work as Council resources have necessarily been needed to repair unplanned problems here (such as the undermining of a section of the causeway) and all around the city.

Nevertheless, there has still been a pleasing amount of progress on maintenance, as well as some capital works, around Omaha including:

Concrete Walkways - There has been a lot of work done on the old paths in the north this year. The main concrete paths from William

Fraser Reserve right through to Blue Bell Parade have been completely rebuilt into nice, wide walkways (with some effort made to help mitigate overland flow) while many small badly damaged sections of path are being replaced around the wider area.



Causeway damage, Damaged tree



Concrete path repair and maintenance

Wooden Boardwalks (Walkways 2, 3 and 4) - Council has now completed the replacement of all three of the very old northern boardwalks and the new ones appear to be working nicely in good time for the upcoming summer!



New wooden boardwalk

Electronic Speed Sign on Causeway - The new electronic speed sign by the western end of the causeway bridge seems to have been doing a good job of reminding motorists heading into Omaha to keep their speed under control.



Electronic speed sign

Boat Ramp Car Park and Signs - While it is pleasing that the main signboard at the ramp has finally been replaced, the planned work on the car park itself is still no further ahead. As far as we know, this project still awaits the completion of stormwater work planned for the area.



New boat ramp sign



Dune path maintenance

Dune Path - The lovely winding path through the dunes south of the Surf Club has been receiving some attention from the Council with the barriers and adjacent plants being tidied and trimmed.

Southern Lake Track - There has also been maintenance work on the track around the southern lake, especially with the installation of some large drainage pipes under the track.



Southern lake maintenance

And lastly, a reminder that your first port of call about maintenance issues around Omaha is:

- For roads, street signs and street lighting, contact Auckland Transport on 09 355 3553 or go to the "Report a Problem" form at www.at.govt.nz, or
- For reserves, parks, walkways, trees, etc, contact Auckland Council on 09 301 0101 or go to "Report a Problem" at www.aucklandcouncil.govt.nz

You are welcome to send any queries or constructive comments about roading, paths, reserves etc to us at us@omahabeach.co.nz

STORMWATER MATTERS

What a year this has been as far as emergency events. Last year's Newsletter detailed some of the work planned and being completed by the Auckland Council. Flooding was a concern being dealt with, only for that to become a region-wide issue with the major weather events of early 2023.



Darroch Reserve flooding

As we all know, the unprecedented amount of rain that fell on 27th January 2023, which was then followed up by Cyclone Gabrielle on 12th February, led to significant surface flooding and damage to the shoreline, dunes, trees and vegetation.

The groundwater table across Omaha rose to unprecedented levels. As Omaha drainage operates with a system of soakage holes to manage stormwater, rainwater soaks into the ground and the sand to join the aquifer. The soakage system became overwhelmed which in turn led to long-term and significant ponding of stormwater in Darroch Reserve, William Fraser Reserve, Day Dawn Crescent Reserve, and Rahui Te Kiri Reserve.

Ultimately, these and other reserves around Omaha are designed to fulfil this function in the event of such weather events and they did their job.

The OBC Committee were in regular contact with Auckland Council, Healthy Waters and locals as a response was planned and implemented to deal initially with the flooding which had affected "habitable floor space".

A pump was brought in to pump water from Darroch Reserve while a more permanent solution was built. The result here is a new sump and pipes through which water is pumped up to Meiklejohn Way where it joins the stormwater that flows to the golf course ponds. This work was completed in September and has helped in reducing the water collecting in Darroch Reserve.

Healthy Waters' other projects around dealing with stormwater have been put on hold as the City prioritises areas that have greater needs.

The OBC Committee remains in communication with Healthy Waters and, as funding becomes available, projects will resume.

Additionally, the detailed design for the stormwater outfall at the Omaha boat ramp has been finalised and Resource Consent granted. Budget has not yet been allocated for this project, again due to other priorities across Auckland.

The new paths that have been built and/or replaced in the North have been shaped to help reduce cross ground flow from sections uphill into the lower lying neighbours' properties. This approach seems to have helped this situation.

We would like to remind residents to consider the effects of overflowing tanks and stormwater runoff upon their neighbours. Overflow pipes running under fences and/or into pathways just shift your problem to your neighbours. Consider installing rainwater tanks or improved soak holes on your property. With the forecast El Nino weather pattern for this summer, having additional water capacity could help with washing of boats and watering plants and gardens.

More information is available here from the Auckland Council. <https://www.aucklandcouncil.govt.nz/environment/looking-after-aucklands-water/rainwater-tanks/Pages/default.aspx>

- Swales, soakage pits and sumps should be cleared out. Council contractors do this on a rotational basis, but buildups can occur so residents should aim to keep them clear of debris. If you see an issue, contact the Council 09 301 0101.

Sign up for periodic updates from Healthy Waters via email to omahaproject@aucklandcouncil.govt.nz



Flooding at Darroch Reserve



Flooding in Southern Isle

Flooding in Day Dawn Crescent Reserve



The new path that skirts Darroch Reserve



Flooding in Southern Isle

HEALTHY WATERS UPDATE

The Healthy Waters team has continued to work hard to reduce the flooding issues in Omaha.

Omaha outfall development

The outfall at the Omaha boat ramp is a critical part of Omaha's stormwater network. The purpose of the outfall development is to help mitigate flooding and ponding issues along Omaha Drive, which affect private properties and cause erosion on the beach.

Healthy Waters are pleased to advise they have received resource consent for this project. Construction costs are being looked at to determine project priority and funding availability.

DARROCH SLOPE

Healthy Waters recognise that more work needs to be done on Darroch Slope to reduce the flood risk in the area. They have installed a small pump as an emergency measure to reduce the risk of habitable floor flooding and will monitor the success of this.



Pump station Darroch Slope

Any questions?

For more information regarding the project, please contact Auckland Council's Healthy Waters department via email HWcompliance@aucklandcouncil.govt.nz or call their contact centre on 09 301 0101.

The Healthy Waters team thanks the Omaha community for patience and understanding while they continue to work on stormwater improvements in the community.

PUBLIC TOILET FACILITY

Last summer saw the construction of the new public toilet facility at William Fraser Reserve. Funded and maintained by Council the facility includes six unisex toilets, men's and women's changing rooms, several baby changing tables as well as outdoor showers.

The new facility is a significant improvement over what was available previously and we thank the Rodney Local Board for their ongoing support of the Omaha community.



New public toilet facility

FREEDOM CAMPING BYLAW

We encourage you to familiarise yourself with the key rules in relation to Freedom Camping, which came into effect under the new **Freedom Camping in Vehicles Bylaw** (September 2022). Check Auckland Council website.



KEY RULES

- You may Freedom Camp in a self-contained vehicle on all Council-owned land across Auckland unless an area is designated a prohibited or restricted area for Freedom Camping.** Omaha has no prohibited or restricted areas.
 - Reserves are excluded from the Freedom Camping Bylaw so remain protected from all camping, including in a vehicle, through the Reserves Act 1977.** This is a relief for Omaha as Reserves at Omaha will now not become large campsites (which was originally proposed) as they remain protected under their Reserve status. Please note that the carparks within the Reserves, eg William Fraser Reserve and Pukemateko Reserve also remain protected due to being within the Reserve boundary.
 - Virtually all local roadsides across Auckland, including Omaha, are OPEN to Freedom Camping, unless the road is classified as a prohibited site.** Basically, anywhere where you can park your car/ vehicle, on the side of the road or within a parking bay, without parking restrictions, is where Freedom Camping in a vehicle or caravan is now legal (however, certain restrictions do apply).
 - Freedom Camping vehicles must be self-contained, unless parked in a special designated non-self-contained parking area.** They must display a blue sticker stating the vehicle is self-contained. Note there will be a 2-year transition period between the current, less rigorous, vehicle self-containment process and a new process that requires self containment to be completed by licensed/certified people and organisations. However, this is dependent on the Government Freedom Camping Act amendments proceeding.
 - A Freedom Camping vehicle can stay for 2 nights in the same roadside park or carpark on Council-owned land, before being required to move by 9 am on the third day. The vehicle cannot return to the same street to freedom camp for the next 14 days. However, it can move around the corner to the next street at the end of each 3-day period.
 - There is no limit to the number of camping vehicles allowed in any one street or carpark, unless an area is a prohibited or a restricted freedom camping area. There are no prohibited or restricted areas in Omaha, outside of the protected Reserves - refer to point 2.
 - A Freedom Camping vehicle cannot park on the grass or grass verge in any circumstances, unless parking in a specified Freedom Camping area where this has been permitted.
 - Auckland Council has allocated no additional funds for monitoring or enforcement of Freedom Camping across Auckland. The enforcement will be undertaken under the same process that is utilised with noise and dog control. Ring 09 301 0101.
 - A review on areas that should be prohibited or restricted for Freedom Camping will now not take place for at least 18 months or onwards.
- Any review would look at complaint numbers before inclusion of an area within the prohibited areas list would be considered.

HOW TO REPORT A FREEDOM CAMPING INFRINGEMENT TO COUNCIL

Ring 09 301 0101

This is the Council complaints line. Unfortunately, there is no online option available.

You **MUST** state it is a Freedom Camping issue at Omaha so it is categorised correctly.

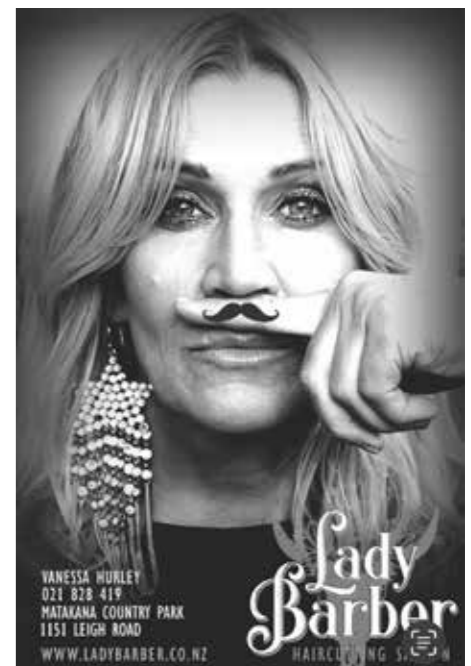
For example:

- A vehicle camping overnight in a carpark in a reserve at Omaha.
- A vehicle camping on the grass verge.
- A vehicle camping on the street or parking bay for more than 2 nights.
- A vehicle that is clearly not self-contained and not displaying a blue sticker that is camping overnight on the road or in a carpark.
- Rubbish that has been left by a Freedom Camping vehicle.
- Disposal of sewage and/or grey water - which is PROHIBITED in ANY location within OMAHA under ANY circumstances.

All of these are illegal under the Freedom Camping Bylaw.

You will need to describe the vehicle, and the location and the breach.

Please make a request to the Council customer contact person that they lodge a request for a compliance officer to attend.



NEWS FROM THE OMAHA SHOREBIRD PROTECTION TRUST (OSPT)

By Marie Ward, OSPT Trustee

The Omaha Shorebird Protection Trust (OSPT) was established in 2009 to protect the shorebirds that live and roost inside the shorebird sanctuary at the tip of Omaha Spit. Members of OSPT monitor shorebird activity, carry out predator control, and protect the nesting and roosting sites inside the sanctuary to ensure our shorebirds are kept safe.



It is once again breeding season for Northern NZ dotterels and variable oystercatchers at Omaha Spit. The Omaha Shorebird Protection Trust protects the shorebirds that nest and roost inside the predator fenced Sanctuary at the northern end of Omaha as best we can.

We have a keen team of trappers that work hard to keep the predators from entering the sanctuary. While we are confident that there are no rats, stoats or hedgehogs resident within the pest proof fence, we unfortunately regularly see cats entering the Sanctuary along the estuary shore line. Last breeding season six dead adult dotterels were found. The freshly dead birds were sent for analysis to show cause of death, and they had cat DNA on them. Cats entering the bird Sanctuary are almost always seen to do so at night. Please, if you own a cat, keep it indoors at night. Last breeding season, we only had two chicks survive to fledge (fly) from our 25 breeding pairs of Northern NZ dotterels. Pretty heart breaking!

The life expectancy of a NZ dotterel is 25-30 years, if they are kept safe from predators. The birds are also "site faithful", meaning many of the dotterels seen regularly at Omaha Spit have lived there longer than many of the Omaha residents.

As well as the NZ dotterels and variable oystercatchers that live and breed on the spit, we have other birds that roost over the high tide. The most abundant of these are the bar tailed godwits. Each September/October the godwits return to New Zealand after breeding in the Alaskan tundra. They fly directly from their breeding grounds back to New Zealand in the longest non-stop flight of any non-seabird species. The godwits arrive back in New Zealand looking thin and with their feathers worn. A few of the godwits have coloured leg flags and bands that allow us to identify individual birds. We know from recorded sightings of the flagged birds from year to year that these same birds return to Omaha year after year.

The godwits spend the summer feeding voraciously in preparation for their flight north to breed in Alaska once more. We have about 450 godwits that regularly roost at Omaha Spit when the tide is high and they can no longer feed on the Whangateau harbour sandflats. The birds use this time to rest, many of them tucking their long beaks over their shoulders with their eyes closed, or sitting on the shell banks. It is particularly important that we allow them peace and quiet while they are roosting for an hour or so either side of the high tide.

The shorebirds that roost and breed at Omaha Spit are our taonga and we should respect and look after them. If you wish to visit the spit over the summer then please keep below the high water mark, and walk slowly past the roosting birds. There will, hopefully, be small dotterel and oystercatcher chicks over the summer months. They will need access to the edge of the tide, so please be mindful of this when you visit. The chicks are small and difficult to see if they are not moving on the beach. Sadly, they freeze when danger approaches and are easily trodden on by beachgoers not looking out for them.

Finally we would like to remind residents that dogs are totally banned from the Shorebird Sanctuary, and also from north of Walkway 2 on the ocean beach and north of the steps from the car park at the northern end of Omaha Drive on the estuary side.

Enjoy the summer and help look after our birds.



Pair of NZ dotterels on their breeding territory at Omaha Spit.



A NZ dotterel "on guard" during the breeding season, calling to his mate to alert them of the "danger" as I walk by - Photos by Marie Ward

Help give the shorebirds a future, shared with us, protected by us.

The Trustees of the Omaha Shorebird Protection Trust are:
Chris Allan (Chair), Marie Ward (Treasurer), Sue Cook, John Mew
If you would like to support the Omaha Shorebird Protection Trust by donations, by volunteering or to report problems, please contact us:
info@omahashorebirds.co.nz
For further information see
<http://www.omahashorebirds.co.nz/>

PREDATOR-FREE OMAHA

By Rob Zubielevitch

We now have over 300 traps in Omaha including within the Omaha Shorebirds Sanctuary and the hills behind Omaha. It has been a difficult year to maintain the traps due to wet weather and, of course, Cyclone Gabrielle. Auckland Council have also been progressing major drainage projects around the lake in the south and the quarry walk which denied us access to our traps for some time.

We are delighted with the flourishing birdlife, with native birds such as kaka, tui, kereru and pateke, our native duck, now common in

Omaha. We also have a stable population of pheasants and quail.

Another interesting development is that three kiwi have been sighted in Omaha over the last year. One was filmed on camera in the Sanctuary. We are unsure what happened to that one. The other two were found in the southern end but, unfortunately, needed to be put down due to injuries.

We know there are kiwi in the hills behind Omaha as we can hear their calls and they have been recorded on private security cameras.

We have still managed an impressive catch so far this year (as at 17 October)

- Rats - 323
- Mice - 310
- Possums - 14
- Stoats - 5
- Weasels - 7

One of our trappers, John Laurence, caught three weasels, three days in a row in his trap. That is very unusual.

Thanks to the team of dedicated trappers: John Mew, Rob Rowdon, Phil Bougen, Joop Zuurmond and Tony Hoksbergen.

We would also like to thank the volunteers who turned out for the Community Planting Day. The establishment of native plants and trees at the southern end of Mangatawhiri Road is an ongoing project aimed at establishing, in the longer term, a staging post for birds spreading out from the Tawharanui Reserve and on their way to Mount Tamahunga.

Finally, a big thankyou to our supporters:

- Department of Conservation
- Auckland Council
- Rodney Local Board
- Takatu Landcare
- Restore Rodney East
- Whangaripo Valley Eggs - who donate our trap eggs.
- Omaha Beach Community Inc. - who fund our peanut butter.

If you would like to join the team of volunteer trappers, please contact Rob Zubielevitch on robzubielevitch@gmail.com

Ed's note: Many thanks to Rob Zubielevitch for overseeing this important and valuable work.

Photos: Marina Zubielevitch

Pateke



Fantails



Kereru



Tui



Kereru

Omaha & Coastal Specialist

v.turner@bayleys.co.nz | 021 795 099
 1 Matariki St, Omaha Beach

Victoria Turner

TOP 10% OF BAYLEYS SALES PEOPLE 2022/2023
\$100 MILLION
 DOLLAR CLUB

BAYLEYS
 ALTOGETHER BETTER
HACKY'S REAL ESTATE LTD. BAYLEYS, LICENSED UNDER THE REA ACT 2008

By Sally Blyth

Most of us check the weather reports in anticipation of a whimsical excursion, planned event or must-do chore, to see if sunshine or rain may prevail and make or break things (alas, it has been the latter for much of this year).

I'm also a big advocate of checking Tide Charts, Surf information, and Moon phases to identify the best times for walking, swimming, playing and - very importantly! - partying.

TIDE CHARTS

Whether you feel like a quick dip, an ocean swim, a beach walk, a surf or a boating escapade, it's always helpful to know what the tides are doing so we're including charts for December 2023 and January 2024 here for easy reference.

Full Tide Charts for the year can be found on the Land Information New Zealand (LINZ) website:

<https://www.linz.govt.nz/products-services/tides-and-tidal-streams/tide-predictions>

See pages 21 and 22 for December 2023 and January 2024 tide charts.

SURF FORECAST (AND MORE)

If you want to check all the marine info in anticipation of a swim or surf, here's a great website which includes: surf forecasts and ratings; wave type, height and energy; swell periods, maps and info; wind state, direction, alerts and maps; tide times and heights; live weather info and temperatures; webcams; sunrise/sunset times.

<https://www.surf-forecast.com/breaks/Omaha>

You can check the hourly forecast, or a 12-day one.

This site is brilliant for surfers - but it's also useful for anyone to have a quick check of before heading to the beach, even if it's just for a walk. A good long beach walk is best



Omaha Beach, 4th April 2023



Omaha Beach, 20th June 2023

done on a medium to low tide, a quick dip is better when the tide is high. It's good to know what awaits you.

If you're a more timid swimmer and don't like big waves, this site will show you when the waves are likely to be more mellow. If you're itching to [safely] tackle the bigger bolder surf waves, you'll be able to see at what time they look ideal for you.

MOON PHASES 2024

From fishing, planting and harvesting by its phases, to partying and skygazing beneath it, the Moon is a key linchpin in our solar system. It guides many facets of nature including, of course, the tides.

Following is a quick reference Moon Phases Calendar for 2024. The black circle is the New Moon (i.e. no moon in the sky - best for stargazing) and the white circle is the Full Moon.

This calendar comes from an excellent Norwegian-based website called Time and Date that includes: the World Clock and Time Zones; weather (local and worldwide); astronomy news and events; calendars and holidays; sun, moon and space; maps and live streams; as well as timers and calculators ... and a whole load more. A great educational tool for all things related to time, date, space etc.

2024 Moon Phases Calendar

Jan	4:☉, 12:☾, 18:☉, 26:☾
Feb	3:☉, 10:☾, 17:☉, 25:☾
Mar	4:☉, 10:☾, 17:☉, 25:☾
Apr	2:☉, 9:☾, 16:☉, 24:☾
May	1:☉, 8:☾, 15:☉, 24:☾, 31:☉
Jun	7:☾, 14:☉, 22:☾, 29:☉
Jul	6:☾, 14:☉, 21:☾, 28:☉
Aug	4:☾, 13:☉, 20:☾, 26:☉
Sep	3:☾, 11:☉, 18:☾, 25:☉
Oct	3:☾, 11:☉, 18:☾, 24:☉
Nov	2:☾, 9:☉, 16:☾, 23:☉
Dec	1:☾, 9:☉, 15:☾, 23:☉, 31:☾

<https://www.timeanddate.com>

The "Sun, Moon and Space" tab includes a Night Sky option - this is a live interactive map of what is going on up above us at any given time, wherever you are in the world. You can select a planet to identify its location, find out about rise/set times and visibility, and view stars and constellations.

You can also check precisely when and where the Moon will rise - there's nothing quite like standing on Omaha Beach and observing the Full Moon rising over the horizon. Watching it cast its reflection across the bay is mesmerizing.

FULL MOON PARTIES

After observing over a long period of time that the weather is always calm, clear and ideal on the night of a Full Moon, with the Moon shining brightly in the sky and no wind, I have always planned a party or event on or around the time of the Full Moon. I haven't had a dud yet as my "Full Moon Theory" has always delivered!

The Full Moon party is a Thai phenomenon which began in 1985 - an all-night beach party that happens on the night of the Full Moon with music and merriment for the youngies. Let's not have that going on here, but it's premise that it's the best time to be celebrating does align with my own theory.

In fact, I've been researching this self-developed theory every month for about 15 years now - it is not scientific, but I do it dutifully and methodically. On only a handful of occasions has my theory failed, and those were when a storm or cyclone hit our shores. As we know, one cannot control the weather gods. Having said that, the Full Moon still generates the best weather of a miserable week.

Otherwise, month after month, year after year, it's been pretty much Full Moon perfection all the way. My phone has captured many glorious Full Moon photos and provides an easy visual record of what the weather was like. This has generated a bit of a trend amongst my friends who now send me their Full Moon photos from all around the world and we compare notes.

It does involve a bit more research and knowhow than just checking the date of the Full Moon - you need to be aware of when the moon peaks and, depending on whether it is day or night, sometimes the best weather and Full Moonrise spectacle will be the evening before the official date, or the next day. But, overall, my research findings do confirm that, if you're planning a party or wedding or special event - take cognisance of when the Full Moon falls!

FYI, here are the dates and times for the Full Moon to peak (when the Moon is 100% full) and rise in the east (it varies in time and position) in Dec, Jan, Feb:

- **Wednesday 27th December 2023** - peak at 1.33pm/rise at 9:14pm
Make a note to observe the Moon rise on Boxing Day evening as well as on the 27th. The former is likely to be the better one.
- **Friday 26th January 2024** - peak at 6.54pm/rise at 9:14pm
The start of Auckland Anniversary Weekend - I predict we're in for a weather treat that weekend.
- **Sunday 25th February 2024** - peak at 1.30am/rise at 9:36pm

Everything aligned for a fabulous Full Moon experience - although it is a Micro Moon which means the Moon is at its furthest orbit point from Earth (apogee). Because of this it looks smaller and is slightly less bright than usual - but it is still sure to be fabulous!



Full Moon rising over Omaha Beach, 31st August 2023

NB: There will also be a Micro Moon on 25th March 2024. The first Super Full Moon (when the Moon is at its closest orbit to Earth - perigee) of 2024 is not until 18th September and, again, on 18th October.

And, if you're an earlybird, do look out to the west in the early hours as Full Moonset is usually also stunning.



WE SERVICE ANY OUTBOARD MOTOR MAKES/MODELS AND OFFER FULL PICKUP AND DROP OFF SERVICES

Rodney Marine are one of New Zealand's most reputable Yamaha Marine dealers located in Warkworth. With a large selection of Yamaha products and accessories in stock we can cater to all of your Yamaha needs.

Our Genuine Parts & Accessories, Qualified Yamaha service technicians & experienced friendly sales staff care about providing you with the best service possible



0800 96 96 94 20 | GOATLEY WARKWORTH, 0910 | SALES@RODNEYMARINE.CO.NZ

MARINE ENVIRONMENT

Moon and Tide

To tie the Full and New Moon phases back to the tides – the greatest difference between high and low tide is around both of these phases. During these Moon phases, the gravitational forces of the Moon and the Sun combine to pull the ocean's water in the same direction. These tides are known as Spring tides or King tides. Micro Moons (Feb/March 2024) lead to around 5cm smaller variation than regular Spring tides, so they are called apogean Spring tides. Whereas Super Moons lead to around 5cm larger variation and are called perigean spring tides. The tidal range is smallest during the first and third quarter Moon phases – known as Neap tides.



Omaha Beach, 4th April 2023

The New Moon phase means the Moon is not visible from Earth – but the dark night skies provide great opportunities for night sky watching. A Super New Moon (i.e. no moon) is set for Saturday 10th February 2024, and stargazing around that time should be next level. Also on 10th March and 9th April.

Do look up!

<https://www.timeanddate.com>

WEATHER

It's been a focus of our year and in the spotlight within this Newsletter for all the wrong reasons – but let's hope that 2024 brings us warmer and more stable weather. We still love (and need) a dose of rain every now and then but, please, let it fall in the wee small hours and not wreak havoc with our summer plans and celebrations!

Here's a great website (also Norwegian based) which I use to find out about what the weather is up to – here, there, anywhere. I always use it when I'm going to an event that isn't on the Full Moon, and also when heading overseas, so I can plan my attire and packing. After using the website for several years now, I find it easy, accurate and valuable, especially the temperature guide.

<https://www.yr.no/en>

NOTICE OF ANNUAL GENERAL MEETING 2024

OMAHA BEACH COMMUNITY

NOTICE OF ANNUAL GENERAL MEETING 2024

The ANNUAL GENERAL MEETING of Omaha Beach Community Inc. will be held at

**OMAHA BEACH COMMUNITY CENTRE,
NORTH WEST ANCHORAGE,
OMAHA BEACH**

on

SUNDAY 21st JANUARY 2024 at 10am

followed by drinks and nibbles.

OBC AGM AGENDA 2024

1. Welcome
2. Apologies
3. Confirmation of Minutes of the Annual General Meeting held 22nd January 2023
4. Receipt of the President's Report for 2023
5. Receipt of the Annual Accounts for the period ending 31st October 2023
6. Confirmation of Amount of the Annual Subscription Fee for the 2024 Subscription Year and Security Levy
7. Election of the Committee for the 2024 year from nominations received in accordance with the Constitution
8. Receipt of Club Reports
9. General Business
 - a. Community Centre lease update

Executive Officer

Omaha Beach Community Inc.

NEW ZEALAND HYDROGRAPHIC AUTHORITY TIDE PREDICTIONS

Omaha

Lat. 36°20.5'S Long. 174°45.9'E

December 2023

N.Z. LOCAL TIMES AND HEIGHTS OF HIGH AND LOW WATERS

	Time	m		Time	m		Time	m		Time	m
1	04:38	0.5	9	05:26	2.3	17	05:02	0.4	25	00:16	0.6
Fr	11:10	2.7	Sa	11:09	1.0	Su	11:50	2.7	Mo	06:48	2.6
	17:12	0.7		17:34	2.4		17:41	0.6		12:51	0.8
	23:27	2.5		23:32	0.8					19:03	2.5
2	05:20	0.6	10	06:18	2.4	18	00:07	2.6	26	01:12	0.6
Sa	11:55	2.6	Su	12:02	1.0	Mo	05:52	0.4	Tu	07:40	2.6
	17:58	0.8		18:24	2.4		12:41	2.7		13:46	0.8
							18:33	0.6		19:56	2.5
3	00:13	2.4	11	00:20	0.8	19	01:00	2.5	27	02:05	0.6
Su	06:03	0.7	Mo	07:07	2.5	Tu	06:45	0.5	We	08:30	2.7
	12:42	2.5		12:52	0.9		13:34	2.7		14:37	0.8
	18:44	0.8		19:12	2.5		19:27	0.6		20:46	2.5
4	01:01	2.3	12	01:08	0.7	20	01:55	2.5	28	02:54	0.6
Mo	06:46	0.8	Tu	07:54	2.6	We	07:41	0.6	Th	09:17	2.7
	13:29	2.4		13:39	0.8		14:27	2.7		15:25	0.8
	19:31	0.9		20:00	2.5		20:22	0.6		21:33	2.5
5	01:49	2.3	13	01:55	0.6	21	02:53	2.5	29	03:38	0.6
Tu	07:33	0.9	We	08:40	2.6	Th	08:41	0.7	Fr	10:03	2.7
	14:17	2.4		14:27	0.7		15:21	2.6		16:10	0.8
	20:20	0.9		20:48	2.6		21:20	0.6		22:19	2.5
6	02:41	2.2	14	02:41	0.5	22	03:52	2.5	30	04:19	0.6
We	08:24	0.9	Th	09:26	2.7	Fr	09:44	0.7	Sa	10:46	2.6
	15:06	2.3		15:14	0.7		16:15	2.6		16:52	0.8
	21:09	0.9		21:36	2.6		22:18	0.6		23:04	2.5
7	03:35	2.2	15	03:28	0.4	23	04:52	2.5	31	04:58	0.6
Th	09:19	1.0	Fr	10:13	2.7	Sa	10:48	0.8	Su	11:30	2.6
	15:56	2.3		16:02	0.6		17:11	2.6		17:32	0.8
	21:57	0.9		22:25	2.6		23:17	0.6		23:48	2.4
8	04:31	2.2	16	04:15	0.4	24	05:51	2.5			
Fr	10:14	1.0	Sa	11:01	2.8	Su	11:51	0.8			
	16:45	2.3		16:50	0.6		18:07	2.6			
	22:45	0.9		23:16	2.6						

TIMES LISTED ARE N.Z. DAYLIGHT TIME

CROWN COPYRIGHT RESERVED

NEW ZEALAND HYDROGRAPHIC AUTHORITY TIDE PREDICTIONS

Omaha

Lat. 36°20.5'S Long. 174°45.9'E

January 2024

N.Z. LOCAL TIMES AND HEIGHTS OF HIGH AND LOW WATERS

Day	Time	m	Day	Time	m	Day	Time	m	Day	Time	m
1 Mo	05:35 12:12 18:11	0.7 2.5 0.8	9 Tu	06:31 12:14 18:37	2.5 1.0 2.4	17 We	00:44 06:29 13:12 19:05	2.7 0.4 2.8 0.4	25 Th	01:51 08:09 14:21 20:27	0.8 2.6 0.9 2.5
2 Tu	00:31 06:13 12:55 18:50	2.4 0.7 2.5 0.8	10 We	00:33 07:23 13:10 19:32	0.7 2.6 0.9 2.5	18 Th	01:37 07:23 14:03 19:58	2.6 0.6 2.7 0.5	26 Fr	02:38 08:56 15:08 21:14	0.7 2.6 0.8 2.5
3 We	01:16 06:53 13:38 19:30	2.3 0.8 2.4 0.8	11 Th	01:28 08:13 14:04 20:25	0.6 2.7 0.8 2.6	19 Fr	02:32 08:20 14:55 20:53	2.6 0.7 2.7 0.6	27 Sa	03:21 09:40 15:50 21:58	0.7 2.6 0.8 2.5
4 Th	02:02 07:37 14:22 20:13	2.3 0.9 2.4 0.8	12 Fr	02:20 09:02 14:55 21:17	0.5 2.7 0.7 2.6	20 Sa	03:29 09:22 15:49 21:51	2.5 0.8 2.6 0.7	28 Su	03:59 10:21 16:28 22:40	0.7 2.6 0.8 2.5
5 Fr	02:52 08:26 15:08 20:59	2.3 0.9 2.4 0.9	13 Sa	03:10 09:52 15:45 22:08	0.4 2.8 0.6 2.7	21 Su	04:28 10:27 16:46 22:53	2.5 0.9 2.5 0.7	29 Mo	04:33 11:01 17:02 23:21	0.7 2.6 0.8 2.5
6 Sa	03:45 09:19 15:57 21:48	2.3 1.0 2.4 0.9	14 Su	03:59 10:41 16:35 23:00	0.3 2.9 0.5 2.7	22 Mo	05:27 11:32 17:44 23:56	2.5 1.0 2.5 0.8	30 Tu	05:07 11:41 17:35	0.7 2.6 0.7
7 Su	04:41 10:17 16:48 22:41	2.3 1.0 2.4 0.8	15 Mo	04:48 11:31 17:24 23:51	0.3 2.9 0.4 2.7	23 Tu	06:25 12:34 18:42	2.5 1.0 2.5	31 We	00:02 05:41 12:20 18:10	2.5 0.7 2.5 0.7
8 Mo	05:37 11:16 17:42 23:36	2.4 1.0 2.4 0.8	16 Tu	05:37 12:21 18:14	0.4 2.8 0.4	24 We	00:56 07:19 13:30 19:37	0.8 2.6 0.9 2.5			

TIMES LISTED ARE N.Z. DAYLIGHT TIME

CROWN COPYRIGHT RESERVED

OMAHA BEACH COMMUNITY INC. FINANCIALS

Due to space constraints, we are publishing an abbreviated set of Financial Accounts. The full set of Accounts may be viewed on our website www.omahabeach.co.nz or you may request a copy by emailing us@omahabeach.co.nz

Copies will also be available at our Annual General Meeting on Sunday 21st January 2024.

	NOTES	2023	2022
Income			
Advertising Income - Newsletter		4,750	2,004
Advertising Income - Other		2,109	609
Donations Received		550	2,770
Interest Income		2,310	309
Subscription Income		79,794	76,708
Total Income		89,513	82,400
Expenses			
Advertising		360	395
Bank Fees		207	290
Depreciation - Fixed Assets		3,723	2,035
Freight, Courier & Postage		303	597
General Expenses		659	210
Insurance		1,140	1,140
Loss on Disposal		-	1,007
Maintenance	7	4,670	10,000
Committee Meeting Expenses & Reimbursements		250	178
Newletters		11,149	11,680
Office & Administration Expenses		5,997	6,313
Pest Eradication		237	96
Printing & Stationery		-	394
Security - Camera Maintenance & Patrol Costs		30,600	25,408
Website Development & Maintenance		1,355	1,320
Total Expenses		60,649	61,063
Operating Income/(Loss) for the Year		28,864	21,336
Less Non Operating and Non Recurring Items			
Freedom Camping Objection Expenses		-	8,408
Donation - Golf Club heat pumps 50%		4,854	-
Net Profit (Loss) for the Year		24,010	12,929

These financial statements have been prepared without conducting an audit or review engagement, and should be read in conjunction with the attached Compilation Report.

2023 Annual Report | Omaha Beach Community Inc. | Page 5 of 10

Statement of Financial Position

Omaha Beach Community Inc
As at 31 October 2023



	NOTES	31 OCT 2023	31 OCT 2022
Assets			
Current Assets			
Bank Accounts			
BNZ Oncall		4,706	3,463
BNZ Cheque		37,117	44,724
ASB Cheque		4,090	4,090
Total Bank Accounts		45,913	52,277
Receivables		5,522	-
GST Receivable		1,912	2,950
Term Deposits - BNZ Bank	6	78,473	67,725
Total Current Assets		131,821	122,952
Non-Current Assets			
Property, Plant and Equipment		25,795	11,231
Total Non-Current Assets		25,795	11,231
Total Assets		157,616	134,183
Liabilities			
Current Liabilities			
Trade and Other Payables		-	578
Provision for Litigation/Legal Fees		10,000	10,000
Total Liabilities		10,000	10,578
Net Assets		147,616	123,605
Equity			
Retained earnings/Accumulated funds		123,605	110,676
Current year earnings		24,010	12,929
Total Equity		147,616	123,605

For and on behalf of the Committee:

President: Chris Allan

Treasurer: Rohan Meuli

Date: 30/11/23 2023

These financial statements have been prepared without conducting an audit or review engagement, and should be read in conjunction with the attached Compilation Report.



Omaha Beach Community Centre Maintenance Fund

Omaha Beach Community Inc
For the year ended 31 October 2023

	2023	2022
Statement of Financial Performance		
Income & Expenditure		
Income		
Golf Club Contributions Community Centre	12,298	9,889
Interest Income - Community Maintenance Fund	1,177	264
Total Income	13,474	10,153
Less Expenditures		
Maintenance - Community Centre	2,500	14,258
Increase/(Decrease) in Fund	10,974	(4,104)
Accumulated Funds at Start of Year		
Community Maintenance Fund - Retained Earnings	48,920	53,024
Accumulated Funds at Year End	59,894	48,920

	2023	2022
Statement of Financial Position		
Assets		
BNZ Current Account		
Community Maintenance	20,604	20,298
BNZ Term Deposits		
Term Deposit 3023 - CM Fund	14,431	13,999
Term Deposit 3026 - CM Fund	-	13,214
Term Deposit - 3045 CM Fund	25,000	-
Total BNZ Term Deposits	39,431	27,214
Accounts Receivable	1,126	831
GST CC	(1,267)	578
Total Assets	59,894	48,920
Less Payables Owing		
Payables Owing	-	-
Accumulated Funds at Year End	59,894	48,920

OMAHA PARK

The sum of \$32,608 is held in Grove Darlow's (Solicitors) trust account. This sum is the payment received from Omaha Park after the costs award made against it and is being retained in OBC's name in Grove Darlow's trust account to defray the cost of engaging any further attempt to carry out a subdivision of the Omaha Park land.

The OBC Committee would like to thank Sphere Chartered Accountants. We thank the team who provide valuable advice and specifically acknowledge Abby Brown, April Corry and Jordyn Hudson for their efforts over recent years.



THE OMAHA BEACH RESIDENTS' SOCIETY INC. (OBRS)

The current OBRS Committee comprises: Tony Coupe (Chairperson), Mark Bower, Fiona Hyland, Daniel McCarthy, Derek Nolan KC, Faris Azimullah and Mayuri Goodwin. The Secretary is Paul Macnicol.

The OBRS Committee has applied itself well this year to the various matters facing it. I am thankful for the contributions that each member has made.

OBC is responsible for all matters affecting the whole of Omaha, including Omaha South. OBRS is a corporate member of OBC and therefore, essentially, each OBRS member is a member of OBC. All property owners in South Omaha are compulsory members of OBRS.

The OBRS was established by the developers of Omaha South to operate as a Body Corporate. Its purpose is to deal with all matters affecting South Omaha and, in particular, to ensure that new-builds and alterations are compliant with design guidelines. Those Omaha South Design Guidelines are administered by a subcommittee - Design Control Committee (DCC). The DCC comprises: Mark Bower (Chairperson), Peter Neeve (Planning Consultant) and Brent Hulena & Richard Harris (both Architects).

Private Plan Change

OBRS submitted a request for a change to some of the provisions in the Auckland Unitary Plan as they affect Omaha South. The purpose of the Plan Change is to amend the definitions of yards in the Omaha South Precinct to better align them with the legacy controls under the former Rodney District Plan which has been the basis for the form of development that has occurred at Omaha South. Rear lots, in particular, were disadvantaged under the yard definitions in the AUP. Owners of these sites would unnecessarily have to seek resource consents to apply instead the longstanding controls that previously governed building at Omaha South. It also clarifies that the development controls in the Omaha South Precinct are the primary controls that need to be met and not also all of the controls applying in the underlying zones, a number of which are inconsistent or would add further unnecessary constraints. The plan change was limited notified to Omaha South properties and a number of submissions were lodged. After a hearing, the Council Hearing Commissioners approved the change and

final Council procedures are underway to incorporate the amendments into the Unitary Plan. This is a most satisfactory outcome.

Council consenting Land Use and Subdivision Applications non-notified

Recently OBRS representatives from OBRS met with Auckland Council (AC) Resource Consents Team Manager to discuss concerns over the processing of resource consent applications for land use and subdivisions affecting Omaha South. AC has processed a number of these without notice. In respect to subdivisions, this has resulted in the number of sections of certain sizes being created in South Omaha which exceeds the number permitted under our underlying Precinct Rules. We have requested that AC include the OBRS in the weekly emailed distribution lists of Resource and Building Consents lodged with AC at no charge. AC has declined a "no charge" option. OBRS is still negotiating a free or equitable charge for the service.

Tennis Courts

Auckland Council owns the land on which all courts at the three sites are located in Omaha South. New 10-year leases have been issued to OBRS by Council for all courts. The maintenance and administration of the courts is managed by OBRS. A court care contractor is employed to maintain the court surface, nets and surrounds. Lighting issues on some courts have been fixed and it is pleasing to see the courts getting regular use.

Rabbits

The proliferation of rabbits is an Omaha-wide issue and is dealt with by OBC. Rabbit numbers are getting notably worse in some parts of Omaha South. OBRS is considering options for eradication or at least limiting numbers. Council is responsible for rabbit control and discussion has begun with them to find solutions to escalate eradication. Shooting by authorised professionals has obvious limitations, as does poisoning (pets). There are other options, in conjunction with those, or separately, for Council to consider.

Community Objectives and Initiatives

The OBRS Committee has an overarching responsibility to administer building guideline compliance for new builds and alterations to structures in Omaha South. We are also considering what initiatives could provide the Omaha South community with additional facilities or services that could benefit the

lifestyle and enjoyment of members. Any ideas from members would be gratefully received.

The upcoming holiday season is near. I wish all members an enjoyable summer and trust it will provide you all with the rest and recreation that the area provides.

Tony Coupe, Chairperson, OBRS

MATAKANA COAST TRAIL TRUST

We are pleased to share an update from Aidan Bennett (Trust Chair) about the Matakana Coast Trail Trust linking Point Wells and Omaha with the Matakana Country Park. It is wonderful to know that great progress is being made and we express our appreciation to Aidan, Allison, Peter and Meg and all those involved in driving this project forward.

Like me, I am sure many of you will have experienced the wonderful cycle trails that have been developed around New Zealand over the past 10-15 years. My wife Michelle and I discovered e-bikes 7-8 years ago and love riding them and have tackled many of New Zealand's trails, including the Otago Rail Trail, Alps to Ocean, Lake Dunstan, Thames to name a few. We have even done an e-bike tour in the heel of Italy.

We purchased our property in the area four years ago which was when I first heard about the Matakana Trail Trust's ambition to build a network of fantastic trails in the area, between Puhoi and Mangawhai. We love riding or walking the existing trail via Jones Road, Takutu Road, Tongue Farm Road to Matakana. For me, expanding the network is a no-brainer due to the huge benefits for all - the community, health, business, climate, safety etc. etc.

So, I put my hand up a little over two years ago to join local dynamo Allison Roe and other big contributors such as Shelley Trotter on the community trust driving the project. The neat thing is that it's a community driven project. I currently chair the trust, stepping in with Craig Donaldson when the previous chair Graeme Stretch moved to the South Island.

Founding chair Allison Roe is still very much the driving force behind the project. We were thrilled to recently add well-known local resident Peter Marsh as a new trustee. Like us, Peter loves cycling and is passionate about getting the trail built. He is well known in the area for giving back to the community.

The amount of energy that has gone into the project from hardworking trustees,

supporters and benevolent business people has been phenomenal. This has resulted in a project that is very well-planned and, in parts, shovel ready. Money remains our biggest challenge.

As most will clearly understand, these past few years have been tough. The biggest challenge for the Matakana Coast Trail Trust is to raise the funds to build the trail. Funds that will need to ultimately come from a range of sources - government, local government and the community and private sector.

The benefits of the trail are huge. An independent report arrived at a return on investment (ROI) figure of 6.3 for stage one - the triangle linking Warkworth, Matakana and Snells Beach. That means for every dollar spent the community will get 6.3 dollars back annually in benefits. The entire trail return is 2.9. That makes it a no-brainer.

While planning continues for the wider trail, the Matakana Coast Trail Trust is currently focusing on a part of the network that we see as a key link. The Point Wells to Matakana Country Park piece. It's a small part in the scheme of things (2.2km) but an important part linking the Omaha and Point Wells cyclists and walkers to the country park. Eventually this will also link to the main trail to Matakana and Leigh.

The Point Wells to Matakana Country Park trail is shovel ready and fully consented. The capital cost is \$1.4 million. It links with the Omaha to Point Wells Road trail and then runs all the way through to the Matakana Country Park. It will offer much needed safety for cyclists and walkers wishing to navigate from Omaha to the Matakana Country Park and will then link with other parts of the trail to be built.

So how can you help, you may ask?

We want to start this section asap. We currently have \$400,000 of funds in the bank and pledged towards this part of the project. The present likelihood of receiving public funding is very low due to the constraints on council and government coffers. We are seeking to raise the remaining \$1m from other sources - the community being one. If you share our desire to see this stretch built as soon as possible, then please consider helping.

If you are interested in finding out more information you can do so by contacting Meg Eriksen via email meg@mctt.org.nz or visit www.mctt.org.nz



The four people driving the Matakana Coast Trail project, from left: Allison Roe, Aidan Bennett, Peter Marsh and Meg Eriksen

POWER TO THE PEOPLE - AN UPDATE FROM VECTOR

Vector recently attended a meeting with our friends at Pt Wells and here is the update they sent afterwards.

"We know the severe weather in your area this year has been extremely challenging, including causing power outages during Cyclone Gabrielle and other storms. We were pleased to meet the Point Wells Residents' Association recently to talk about some of the work we are doing to improve electricity

resilience and reliability in your area. We thought you might also appreciate hearing about how we are trying to lessen the impact of future bad weather.

Vector's role in this is as the electricity distribution business, or lines company, for the Auckland region, from Mangawhai Heads in the north to Papakura in the south. Electricity goes from the generators to Transpower, then to us and we deliver it to your home or business.

There are some tricky challenges with a rural electricity network, one of the most significant being the damage caused by trees on the power lines during windy weather. Because of this, we've ramped up our work to keep them away from the lines. However, our efforts are governed by strict regulations about what we can do. We have been asking for a change to the regulations for years, so we can increase the tree trimming and reduce the outages. Watch this space!

We're also in the final stages of laying a new underground cable, all the way from Wellsford to Warkworth, to boost capacity for the future, and increase reliability. This has been a huge project with \$50 million invested over four years. Thanks for your patience with our crews, and the traffic management that's required to complete the work safely.

COMMUNITY MATTERS

Also, we've built a new substation at Big Omaha, so power supply is more evenly spread and fewer customers are attached to an individual line. This means, if an outage happens, not as many will be affected as they were in the past.

Did you know ... electric vehicle uptake in the Warkworth area is forecast and on track to grow more than 8 megawatts by 2032. That's about as much electricity as is needed to power 4,000 new homes!"

THE INTERNET @ OMAHA

Fibre Network

To find out more about getting connected to the new ultra-fast fibre network in the area visit www.chorus.co.nz/get-connected or call 0800 222 644.

Omaha Beach Community Inc. Website

www.omahabeach.co.nz

The official OBC website is kept up to date



with news and events, as well as useful information on the area, its activities, its history, etc so please visit!

If there's anything important or interesting happening around the community, then please let us know at us@omahabeach.co.nz and we'll update the website accordingly.

Omaha Beach Community Facebook Page
www.facebook.com/groups/omahabeach



While not operating under the auspices of the OBC Committee, we appreciate the role that the ever-busy local Facebook page plays in providing useful information to residents and visitors. Our thanks to the Admins for their time which is so generously given!

Matakana App
<https://matakanacoastapp.com>

Download this handy app to your phone to find out what's going on in and around Matakana as you're out and about.

BEACH & SAFETY ETIQUETTE

PLEASE RESPECT THE BEACH THIS SUMMER:

- **Respect the dog rules and pick up after your dog (page 33).**
- **Stay off the dunes, they need protection for a purpose!**
- **No fires or fireworks on the beach**
- **No alcohol on the beach between 7pm and 7am during daylight savings.**
- **Stay safe in the water; let someone know if you intend to go swimming alone.**
- **Be kind and respectful - and show patience.**
- **Observe the speed limits when driving, including the causeway.**
- **Use golf carts appropriately; no racing around on the roads.**
- **Report anything untoward to Insite Security or the Police.**

DO YOU HAVE A PASSION FOR YOUR LOCAL OMAHA COMMUNITY?

WE'D LOVE YOU TO JOIN OUR OMAHA BEACH COMMUNITY INC. COMMITTEE!

The OBC Committee undertakes a wide range of work on behalf of the community. Things like dealing with Council and Auckland Transport on drainage, flooding, shore protection, paths and roading issues to name a few.

Then there's working with Police and Insite Security to help keep the community safe, including funding Insite patrols across key periods of the year and also the installation of new security cameras. And let's not forget predator control or making submissions on local bylaws and regulations, to name a few more issues that your Committee members work through.

Whichever way you look at it, this group really is the voice of the Omaha community.



But there's constantly more to do and we always need more help, so we're looking for a couple of new members to join the team. The time commitment includes attending a monthly meeting on a Thursday afternoon/evening and involvement in the occasional project.

So, if you're interested in making a meaningful difference, and have the time and energy to give to your community, please contact us, we'd love to hear from you.

Email: us@omahabeach.co.nz

CLUB REPORTS



OMAHA BEACH GOLF CLUB

General Manager: Paul O'Brien
President: Robert Begg
Patron: Michael Dowd
Email: gm@omahagolf.co.nz
Website: www.omahagolf.co.nz
Phone: 09-422 7551

Omaha Beach Golf Club is providing 21,483 rounds of golf from year to year. Due to the weather this is nearly 14% lower than the prior year. It's a tough job running a Golf Club, although the new motorway is making a positive difference plus the closure of Gulf Harbour is increasing our new member applications.

Community Centre

We have better news in regard to the Community Centre and, in particular, the bar, café and lounge area. Recent visitors will notice:

- New catering manager at the Estuary Café and Bar, Warwick, from Bramble at Matakana Country Park. (Café food 7am-5pm daily with longer hours Friday/Saturday/Sunday).
- New blinds, carpet, and heat pumps. And thanks again to OBC for funding one of the heat pumps - it's much appreciated.
- New tables and chairs.
- And lastly, new acoustic ceiling tiles and paint work.

As a result, Friday nights are very busy and require a booking now. It will get busier over summer so be sure to book early.



OBC Committee members Rohan Meuli and Paul Head, with Paul O'Brien (centre) - with new heat pump above.



12th Tee



Community Centre - before and ... after

Also new is an extended Bar licence area out to the Totara tree and the ice cream truck, allowing our beer and wine sponsors to erect a marquee in summer and showcase their food and beverage options. These might include a meat smoker, paella nights, kids BBQ, pizza food trucks and golf club fitting sessions and/or competitions on the practice green.

Golf Course

Work continues on with the golf course itself.

This includes completing the 18th hole, to be raised half a metre, and other big-ticket projects on the course that add value to the Council asset as well as making our Omaha community a more attractive and desirable place to visit and settle.

We welcome the community to walk on the course early in the morning or later at night. We have two bathrooms on the course in the southern nine plus a 24-hour bathroom outside the Estuary Café back door. Please watch out for golfers who will have right of way till dusk in the evening.



Southern Course

Make A Booking

If you want to book for a special lunch or small private party call Christine in the Admin office on 09 422 7551. Or if you have some special catering needs, call in and see Warwick at the café.

If golf is your interest and you want to join our Club, give the Golf Shop a call. Organise a game using green fees and/

CLUB REPORTS

or book a lesson. Emma, our NZPGA Professional, can arrange lessons and has a big following already through her women and junior coaching commitments.



Warwick at The Estuary Café and Bar

Hang on folks, summer is coming and the Omaha Golf Club and Community Centre welcome you here to be part of our summer celebrations.

Best Wishes

Paul OBrien, GM



OBC MEMBERSHIP BENEFIT

OBC Membership means you are also a Social Member of the Omaha Beach Golf Club.

This entitles you to purchase alcohol from the Bar at the Golf Club/Community Centre when you visit and provide proof of OBC membership in the form of a Social Membership card.

To apply for a Social Membership card please visit the OBC website Omahabeach.co.nz and download the application form. Scan the completed form and email it to support@omahagolf.co.nz with "Social Membership" as the subject line.

The Golf Club will verify your membership of the OBC and you will then be issued a Social Membership card. By presenting this card at the bar you may receive a discount on your purchase.

OMAHA BEACH SURF LIFESAVING CLUB (OBSLC)

President: Linda Crisford

Email: mail@omahasurf.co.nz

Website: www.omahasurf.co.nz

Phone: 09-422 7022

This year's theme is "THANK YOU VOLUNTEERS"!



Every year there is a focus on what the Club can do for its members and the community.

In 2021 it was our response to COVID, ensuring the physical and mental wellbeing of our members and community was a priority to enable us all to get through such a challenging time.

In 2022 our focus was on being a family-centred Club, attracting members of all ages and being inclusive. This resulted in OBSLSC winning Surf Lifesaving Northern Region "Club of the Year", the first time ever!

This year, 2023, the focus is on being volunteer-centric, putting our volunteers – the lifeguards, the committee, the Junior Surf committee, the support groups, water safety, our trainers, instructors and surf officials and parents – at the heart of all we do. Our volunteers give up their time so happily and willingly to ensure our Club is a well-organised, skill building, professional yet fun place to be for all ages, whilst always keeping SLSNZ's vision "no-one drowns at our beaches" at the forefront of all we do.

To keep interest high, we are continuing to run events and be involved in activities that interest all members. We participated in the 90 Mile Beach IRB race, NRs carnivals, Mt Monster, regular all ages and abilities paddles and a hugely popular Adventure Camp at Waipu. None of this would be possible without our trainer Dan Grant and Surf Sport volunteers Tracy Blair, Rohan Whittaker and Rachel Iversen, our amazing paddlers Frank Maher and Deb Collins, and all our dedicated guards like Flynn, Bella and Stella.

Rob Earley, our Club Captain, received North Harbour's "Volunteer of the Month" in September – another great achievement for an outstanding volunteer.

Our lifeguards are amazing and their dedication to keeping the community safe is testament to their hard work.

Read the infographics below to see how much they do!



Moving forward into 2024, we are very aware that the area's proximity to Auckland, the new motorway and a growing population will bring new and increasing challenges. We aim to meet these challenges by training, retaining and upskilling our members to fulfil our lifeguarding obligations and enable us to manage the requirements of a demanding season.

Beach Wheelchair

We have a purpose-built beach wheelchair donated to the Club by Judith Herbert. This is a fantastic asset to the community. Please

CLUB REPORTS

contact David Stone on 0274 909 188 or Brian Wade on 0274 992 257 to book a time and they will open the bunker for you.

Sponsors

Also, a big Thank You to our sponsors:

- Platinum Sponsors: Bayleys, Javln, Debt Managers;
- Silver sponsor: Omaha Holiday Homes; and
- Bronze Sponsors: Dark Lab, Sculptureum, InSite Security.

Your support is invaluable not just financially but, more importantly, as links to our community.

Please contact our wonderful sponsorship volunteer Darren Hodgetts on 021 0814 1202 If you would like to join our sponsorship family.

Fundraising

Raising money for the Club is an ongoing constant concern and every dollar counts.

As you are aware the Club is growing. We had 350 Juniors registered last season which is fantastic – a wonderful sight to behold on the beach – plus 27 Rookies (young trainee lifeguards). They need equipment to use and train on so please support our wonderful guards and Club by donating directly to the Omaha Beach Surf Lifesaving Club.

Bank account 12-3050-0277263-00

or contact Gayleen Redding, our hardworking administrator at mail@omahasurf.co.nz or Jess Broun (our Treasurer) at thebrouns@gmail.com.

I thank you in advance for your donations.

We are a family and community Club – so come and join us! Have fun, learn new skills and enjoy new friendships.

Remember this summer – don't swim alone, swim between the flags and check the conditions so you keep safe.

Have a wonderful summer.

Linda Crisford
President, OBSLC

OMAHA BEACH BOWLING CLUB

President: Christine Wilkinson

Patron: Tony Teare

Email: wilkinsonsmc@gmail.com

Phone: 021 177 7173

It's been a VERY busy year at the Omaha Beach Bowling Club with so much going on!



First bowls of the 2023/2024 Season

In May we started our renovation/addition to the Clubhouse. This was undertaken with great excitement after years of waiting for enough funds to get the works underway and completed. Affinity Homes, with the help of ITM Matakana and many of the members, got this happening. Frank Timmins ran the project, which was a big undertaking, and he got the project finished on time for the Opening Day of the Season. This means that we don't have people split inside and outside and we can now all fit in the same space.

The Opening Day was a "triple" celebration of our 30th Anniversary, the Opening of the Renovated Clubhouse and the celebration of bringing our new sponsor on board. We welcome Heather Walton and Mark Bycroft from "Ray White Matakana and Omaha". The season was opened with a "first" bowl put down by Graham Ward, our oldest member – now in his 90s and still playing most weeks in our regular tournaments.

We then had a fun roll up before cutting the ribbon to open the new renovation. This was held by Christine Wilkinson (President) and Frank Timmins (Vice President), with the ribbon being cut by Lesley Lawson, a long-time member of the Club. This was followed by a welcome to Heather and Mark.

After all the formalities, we sat down to a light meal. There was a 30th celebration cake which was cut by Warwick Spicer, ex-President and long-standing member. We only have one playing member from the inaugural membership 30 years ago – this member is Tony Teare, who is now our Patron – and still winning a lot of our Club Championships.

This year we have, again, grown our membership and it's so good to see new bowlers coming into the mix, with quite a few

of the new members being from our friendly neighbours at the Golf Club. With the golf course having been so wet, and sometimes unplayable, these members have been able to come and play bowls instead. Bowls has allowed so many people to still get outside, even after the continuous rainfall we've had – the most rainfall in many years. It's also great to see many of the newer bowlers wanting to progress further by playing in more challenging competitions.

We have a Committee of seven for this coming season. The Committee spends many hours making sure that everything keeps running in a positive way and we do our best to keep everyone happy with the bowling on offer. Now that we have a new green and our renovation completed, hopefully we can settle down and enjoy more bowling over the coming year, without any large projects on the go.

As a Club, we are still offering coaching here at Omaha on Wednesday and Saturday mornings which is fantastic. It gives everyone a chance to learn new skills and improve their game if they wish. Wendy Jensen is now offering individual coaching as well. Others prefer to come along on a Wednesday morning and/or Sunday afternoon for social bowling. There is something for everyone.

A big thank you to all of our sponsors who continue to support the tournaments throughout the year and pay for signage on the scoreboards and sheds. We support you in return, whenever we can. We are always on the lookout for additional sponsors. Please contact Christine if you can help.

There is a lot happening during this bowling season, with bowling on most days of the week.

CLUB REPORTS

- Tuesday, we have members that travel to Mahurangi and play in their competitions;
 - Wednesday is coaching and/or social bowling;
 - Thursday is Club Competition or Open Competition;
 - Saturday is coaching and general roll up; and
 - Sunday ... we have "some" Sunday Funday's.
- In between all of this, we also have our Club Championships and, as a member, you are welcome to come and bowl whenever you'd like.



Frank Timmins and Warwick Spicer



Cutting of the Ribbon by Lesley Lawson. In doorway from left: Christine Wilkinson, Jill Rowdon, Lesley Lawson and Frank Timmins



Look out for us out on the green, in our turquoise club shirts, and feel free to pop in and say hello.

Christine Wilkinson
President, Omaha Bowling Club

OMAHA TENNIS CLUB

Administrator: Amanda Brown
Email: seanamanda13@hotmail.com

The Omaha Tennis Club consists of three courts located next to the Omaha Community Centre.

Family membership is \$100 per annum. The season runs from 1 December to 30 November.

If you would like to join, please email Amanda on seanamanda13@hotmail.com

FIND OUT MORE

A reminder that you can find out more about the OBC and local activities:

- OBC website www.omahabeach.co.nz

- "Omaha Beach Community" Facebook page <https://www.facebook.com/groups/omahabeach>

Contact us by email us@omahabeach.co.nz with any queries or suggestions.



OMAHA CLUBS - A SUMMARY

Here's a snapshot of Clubs/Groups that are in Omaha.

CLUB	CONTACT	PHONE	EMAIL
Omaha Shorebirds Protection Trust	Chris Allan	021 745 337	chrisa@grovedarlow.co.nz
Omaha Beach Golf Club	Paul OBrien	09 4227551	admin@omahagolf.co.nz
Omaha Beach Surf Life Saving Club	Linda Crisford	09 422 7022	mail@omahasurf.co.nz
Omaha Bowling Club	Christine Wilkinson	021 177 7173	wilkinsonsmc@gmail.com
Omaha Tennis Club	Amanda		seanamanda13@hotmail.com



ANIMAL PATROL

Firstly, a reminder to everyone that, if you see unacceptable behaviour by any animals around Omaha, please contact Auckland Council on 09 301 0101.

Now, speaking specifically to pet owners, we know that, for many of our residents and visitors, having your pets around is an integral part of enjoying being at Omaha but please do take responsibility for them.

Dog Owners - please make sure your dogs are well-behaved at all times - not too much barking, no hassling birds, absolutely no biting of course - and make sure you pick up after they've done their business!

Here are the dates and hours when dogs are permitted on the beach:

Beach	Summer	Winter
	Off-leash 5pm - 10am	Off-leash All times
	Prohibited 10am - 5pm	

Summer rules apply from 1 December to 1 March.
Winter rules apply from 2 March to 30 November.

Dogs are prohibited from the Shorebird Sanctuary at all times.

Horse Owners - Please pick up after your animals too, as it's very unpleasant to see their large droppings on the beach and the dunes (especially around Walkway 5)!

Cat Owners - Please keep your cats inside at night so they're not tempted to head north to the bird sanctuary and discourage them from hunting the native birds that are growing in numbers around Omaha.



Sadie (French bulldog) and Neo (black & white spaniel/pug) have fun at the water's edge



SAFETY & SECURITY

FROM WARKWORTH POLICE

A message to the good people of Omaha from your local Police:..

Well done everyone!! You've endured the weather that masqueraded as summer last year. You've pulled through the worst winter on record, and now you've emerged on the other side a stronger person for the experience.



Summer is here!! Time to hit the beach, to dust off the golf cart and hit the course - and that's where the golf cart belongs!! Your local coppers are not looking to be the "Fun Police" but golf carts are simply not up to spec for tooling around on our roads. It's not legal, or safe for that matter, to hand the kids the key to the golf cart and send them out onto the road with a jaunty "drive sensibly you guys".

Cast your mind back ... did you always do what your parents told you to? Enough said. We'll be out and about in numbers this summer and the message from on high is that there is zero tolerance in matters of road safety. Speed, seatbelts, impairment (that's drink driving in the old money), and distractions (cell-phone use) - if we see you doing it, expect a ticket!

Same as last year, if you see something that the Police need to act on now then that's a call to 111. If you think to yourself, 'that's something the Police should know about' then that's a call to the 105 number.

Enjoy your summer folks!!

Hamish Buick
Senior Constable, Warkworth Police

SAFETY & SECURITY



Please take heed of this important message from Insite Security

Ph: 09 425 7113 admin@insitesecurity.co.nz
Alarm, CCTV, Monitoring, Patrol

Hi All

Summer is here ... and let's hope we have one this year!

Insite dispatches a patrol in Omaha each night over the peak period.

We aim to keep the area as safe as possible and deter any behaviour that is contrary to OBC, OBRS and legal objectives.

We all feel we are owed a summer - particularly our teens. There are already some restless ones out there causing mischief/vandalism. As I've said before - one guard cannot "herd cats" all over Omaha. Please be vigilant and know when and where your teens are.

The out-of-area youths with ill intentions are already prolific in the wider area.

From a safety point of view, the summer of 2021/22, with the tragic loss of a young life, is one we do not wish to repeat!

Last new year we had a potential powder keg with hundreds of drunk under-age youths and no police availability - we stopped several potential brawls and were lucky to get away with just a huge mess for the Surf Club to clean up.

Please know where your kids are, what they are doing and with whom.

Feel free to talk to our guard. We are happy to communicate with an address or phone number when they are where they shouldn't be.

We are more than happy to see parents pick up their kids from a predetermined place rather than try to locate them when the situation is getting late and out of hand. This is a great response and also provides support to the guard, sending a message of solidarity to the rest.

We are very aware residents have different views of what is acceptable. From our point of view, it's about what is safe for all.

Golf carts are coming out again for the summer. If the cart is on the road, then you need to have a licence. It is only a matter of time before some youths "misjudge" something and cause an injury.

We invite all parents interested in their youth's whereabouts to supply contact details.

You can email them to admin@insitesecurity.co.nz or, even better, wave down our patrol and have a chat and give them some details or turn up at the Surf Club car park at 10/11pm to escort your crew home.

Remember to keep the tools and toys locked and out of sight.

You are by far our best eyes and ears as you are everywhere and usually at the right time. The Neighbourhood Watch initiative is a great tool and helps connect our efforts.

When you see any suspicious activity, Insite or the police need details: time, description, rego, activity/behaviour, direction etc. If safe, and you have backup, then ask questions - if unsure then just observe from a distance.

We also have a few other objectives like keeping our foreshores from being pillaged, giving our feathered friends the space they need to survive, education around the alcohol ban, pets on the beach, camping and running our eye past every property on the Isle.

Thanks to the OBC for all your hard work to keep Omaha the special place it is.

Have a safe summer!

Council Noise / Animal control 09 301 0101

MPI / Fisheries 0800 809 966

Police non-urgent 105

PHONE INSITE SECURITY ON 09 425 7113

Serving and Protecting our Community for over 15 Years

DOMESTIC & COMMERCIAL

- New Alarms - Design, Install & Service
- CCTV - Design, Install & Service
- Panic Alarms
- Fire Alarm Systems
- Access Control Systems
- Alarm Monitoring
- Rapid Response 24/7
- Premise Patrols
- Lockup Checks

FOR ALL YOUR SECURITY NEEDS!

Contact Insite for your FREE SECURITY appraisal.

09 425 7113

www.insitesecurity.co.nz

OMAHA RUBBISH AND RECYCLING COLLECTIONS

PLEASE TAKE NOTE OF THIS IMPORTANT INFORMATION AND MAKE SURE ANY TENANTS ARE AWARE OF THE PROCESS AND DATES FOR RUBBISH AND RECYCLING COLLECTIONS. RUBBISH AND RECYCLING ARE COLLECTED SEPARATELY.

OMAHA RUBBISH AND RECYCLING

By way of a reminder ... Omaha property owners are provided with the following services throughout the year:

- Northland Waste provides a weekly (normally a Monday) kerbside Rubbish collection service using their wheelie bins and/or orange plastic rubbish bags.
- Auckland Council contracts with a third party to undertake fortnightly (normally a Monday) kerbside Recycling collections using their wheelie bins.

However, weekly Rubbish and fortnightly Recycling collections have proven insufficient to cope with the needs of Omaha over the peak summer and holiday period.

For a number of years now, the OBC committee has worked with Northland Waste in relation to the Rubbish collections, and Auckland Council in relation to the Recycling collections, to receive the benefit of additional collections over the busy summer and holiday period - in an attempt to keep Omaha clean and tidy.

We're delighted that we've been able to continue with these arrangements, and the following apply for this upcoming summer and holiday period, and very much appreciate the co-operation and assistance given to the OBC, and the Omaha community, for these additional collection services.

RUBBISH COLLECTIONS

From the week following Christmas 2023, through to the week following Waitangi weekend in February 2024, we will have the benefit of twice-weekly kerbside Rubbish collections, using the Northland Waste wheelie bins and/or orange plastic bags.

See the Calendar below for collection dates.



RECYCLING COLLECTIONS

From the week following Christmas 2023, through to the week of Auckland Anniversary Day in January 2024, we will have the benefit of weekly kerbside Recycling collections,

See below for further guidelines and detail of what can, and what cannot, be recycled:

✓ YES PLEASE

Containers



plastic containers* numbers 1, 2 and 5



glass bottles and jars



steel, aluminium, and tin cans

Paper and cardboard



advertising mail and envelopes



newspapers and magazines



paper and cardboard packaging



egg cartons and cereal boxes

*Only plastics 1, 2 and 5 are accepted and recycled through Auckland Council's kerbside recycling collection.

✗ NO THANKS



plastic bags (full or empty)



food scraps



clothing, shoes and bedding



hazardous waste, chemicals and empty aerosol cans



all types of batteries



nappies



polystyrene



cookware, Pyrex and window, mirror and drinking glass



electronic and electrical items



medical waste



garden waste



gas bottles



using the Recycling wheelie bins.

See the Calendar below for collection dates.

Important things to note about the Recycling collection service:

Recyclables will ONLY be collected from your official green (yellow lid) Auckland Council Recycling wheelie bin. Recycling will NOT be collected from other bins or containers or if left loose next to the Recycling wheelie bin.

To help manage the volume of recycling, **please put your Recycling wheelie bins out by 7am on each collection day - regardless of how much is in the bin.**

OMAHA RUBBISH AND RECYCLING COLLECTIONS

If the contractor has not collected all the recycling in your street on the specified collection day, please leave your Recycling wheelie bin out, and they will return the next working day to empty your bin. The collections start from the northern end of Omaha, so it's likely that it will only be the southern residents needing to leave their Recycling wheelie bins out for collection on the following day.

You must be able to close your Recycling wheelie bin lid (to enable the truck to lift and empty it, without spillage).

If your bin is not large enough, it can be swapped for a larger 360L bin at no cost. Please contact Auckland Council to arrange this.

From Warkworth:
1.4km East of the Hill Street Intersection heading towards Snells.

From Snells:
4.3km from the Sandspit Intersection heading towards Warkworth.



LOOK FOR OUR SIGN!

WARKWORTH RE:Sort RESOURCE RECOVERY PARK

183 Sandspit Road, Warkworth

Open 7 days

Monday – Friday 8.30am to 5pm

Weekends & Public Holidays 9.00am – 4.00pm

Closed Christmas Day and New Year's Day

The fortnightly kerbside Recycling collections will revert to the normal schedule in February 2024; and those for Rubbish the week following Waitangi Day.

If in doubt, the collection day for your next Recycling collection day, once we have reverted to the normal collection schedule, can be found on the following Auckland Council website:

Find your rubbish and recycling collection day (aucklandcouncil.govt.nz)



The Black Book.

Your VIP Guide To Omaha

From trusted tradies to annual events all wrapped up into one little handbook. Get your hands on it now. Contact...

Heather Walton-Byrcoft & Mark Byrcoft



E | heather.walton@raywhite.com

Ray White Black Group Realty Limited Licensed Agent REAA 2008

OMAHA RUBBISH AND RECYCLING COLLECTIONS

SUMMARISED CALENDAR OF OMAHA RUBBISH & RECYCLING COLLECTION DAYS OVER SUMMER 2023/24

DECEMBER 2023						
Mon	Tue	Wed	Thu	Fri	Sat	Sun
18 th RUBBISH & RECYCLING	19 th	20 th	21 st	22 nd	23 rd	24 th
25 th Christmas Day	26 th Boxing Day RUBBISH & RECYCLING	27 th	28 th	29 th RUBBISH	30 th	

JANUARY 2024						
Mon	Tue	Wed	Thu	Fri	Sat	Sun
1 st New Year's Day	2 nd RUBBISH & RECYCLING	3 rd	4 th	5 th RUBBISH	6 th	7 th
8 th RUBBISH & RECYCLING	9 th	10 th	11 th	12 th RUBBISH	13 th	14 th
15 th RUBBISH & RECYCLING	16 th	17 th	18 th	19 th RUBBISH	20 th	21 st
22 nd RUBBISH & RECYCLING	23 rd	24 th	25 th	26 th RUBBISH	27 th	28 th
29 th Anniversary Day	30 th RUBBISH & RECYCLING	31 st				

FEBRUARY 2024						
Mon	Tue	Wed	Thu	Fri	Sat	Sun
			1 st	2 nd RUBBISH	3 rd	4 th
5 th RUBBISH	6 th Waitangi Day	7 th	8 th	9 th RUBBISH	10 th	11 th

FOODIE CORNER

A local food overview from our resident foodie, Lauraine Jacobs ...

SUMMER ENTERTAINING

Summer entertaining at Omaha Beach just got a whole lot easier with the total revamp of The Superette. Gretchen Young took over a year ago and has transformed our mini supermarket into one of the best stocked and run food shops in the entire country. A rural store it is not. Gretchen loves food and wine and on the shelves are some outstanding products, a wonderful selection of wine, and fresh fruit, vegies, gourmet breads, and fresh meat and deli items that mean you may not have to cross the causeway for the entire summer. Especially commendable is her range of the newly fashionable rosé wines and ice cream selection for hot and hungry kids!

In the same complex, residents will be keen to meet the new operators of the popular Omaha Beach Café and Eatery. TJ and Jasmine Sandhu. TJ is a chef and has set up a menu of excellent fare, straight from the kitchen, to complement the fine coffee, drinks and wee "fluffies" for the kids. We wish the couple well as their new son is arriving

right on Christmas and they've shown their commitment to the district by also taking over Little & Local at Snells Beach.

And another change worth checking out, Omaha Beach Golf Club and Community Centre's The Estuary Café has a completely new menu to match the stunning new décor. On sunny days enjoy the outdoor deck or on rainy days sit inside and snack or dine on excellent food, prepared by Warwick and the team. Full bar and dining open to everyone on our community.

The causeway cycle path is a popular trail for both bikers and walkers and the Farmers Daughter is well placed right on the estuary. Terrific fresh produce picked from offered for healthy breakfasts, lunches and snacks through the day from 7.30am, and a great selection of food to go. Look for their Dinner menu which will operate on selected nights through the summer.

Also nearby, Rothko at the Sculptureum is open for lunches throughout the summer, and don't miss their dinner menu for a really great meal out on Fridays and Saturdays. Further along at Point Wells the Point Wells



General Store has excellent fish and chips, burgers and pies. Eat on the little deck, or takeaway for a relaxing picnic on the nearby waterfront.

Here's a simple and fresh no-fuss recipe from Lauraine Jacobs - if you have a successful fishing expedition, this will make savouring your catch easy, tasty and eye-catching!

Fresh Marinated Fish with lemon and fennel

- 5-6 chicken legs
- 300g fresh fish (kingfish, snapper, kahawai etc)
- 1-2 lemons, juice and finely grated zest
- 1 tsp flaky sea salt
- 2 tbsp lemon-infused extra virgin olive oil
- Half a small fennel bulb (or red onion)
- 1 tbsp finely chopped dill (or parsley)
- 1 tsp pink peppercorns

We're always hanging out at our place for a good haul of fresh fish over the summer. One of the favourite ways to eat fresh from the ocean is the no-cook quickly marinated and garnished sliced snapper, trevally, kahawai and kingfish. You need the sharpest of knives to do this and the best of ingredients to give the fish plenty of flavour and interest.

1. Slice the chilled fish thinly and evenly with a very sharp knife and lay the slices on a serving plate, slightly overlapping as you work.
2. Squeeze the lemon juice over the fish and scatter the salt over. Grate the lemon and add this zest to the dish.
3. Use a mandolin if you have one to shave the fennel (or onion) very thinly, and place this evenly on top of the fish. (Otherwise try to cut the fennel paper thin for the best effect.)
4. Drizzle the olive oil over and sprinkle a few peppercorns and the chopped dill to finish. You can also add finely grated black pepper or use a scattering of Japanese shichimi togarashi pepper to spice the dish up a little. Refrigerate until needed.



Lauraine Jacobs has spent her summers (and winter weekends) at Omaha for over twenty years. A well-known food writer, she is author of *It Takes A Village*, a guide to the Matakana area. She still has a few copies for direct sale. Email lauraine@laurainejacobs.co.nz

WHAT'S ON THIS SUMMER?

What's on? What is there to do? The answer - plenty!!

We are so fortunate that this area has many exciting events and activities, through summer and, indeed, throughout the year. There is a huge array of wonderful places to eat, drink and enjoy socialising. Experience as much as you can this coming summer!

Do download "The Matakana App" for the latest in what's on in the area. You can also access the Matakana Coast Tourism site, which has a lot of info about local activities. <https://www.matakanacoast.co.nz>

MATAKANA COUNTRY PARK

Affordable Family Fun

<https://www.matakanacountrypark.co.nz>

The Matakana Country Park was established in 2005 by John Baker who sadly passed away on Boxing Day 2022. It slowly but surely took on a life of its own over the years and the special place that John created continues to flourish under the guidance of new owners Brendan & Kim Coghlan.

There's quite a story behind how Brendan and Kim acquired the Country Park. They were driving in the Matakana area on a day trip from their home in Orewa, in pre-Covid times, when they saw the For Sale sign. Brendan is a builder/property developer and Kim is a horsewoman and, intrigued, they made some enquiries. Nothing eventuated and, being curious humans rather than active purchasers at that time, they put it out of their mind and got on with life, unaware that this expansive property that had caught their eye would soon become a part of their future.

Sometime later they were on an outing in Wellsford and Brendan went for a wander. He passed a local real estate office and saw the Country Park advertised in the window. As he peered closer, he saw that the agent was someone he knew. With his interest in the place piqued again, and an element of serendipity in the air, he rang up to make further enquiries. One thing led to another and, in 2019, Brendan and Kim found themselves as owners of this large park!

They set about gaining a full understanding of its history and development, with a view to enhancing what John had initially developed. The businesses that had been established under John's management remain - art gallery, craft shop, eateries, professional services etc - but there is now a range of additional offerings. There's a jeweller, nail salon/suntan clinic, fitness centre, acupuncture/physio/chiropractor, hairdresser, tattooist, real estate office, bike mechanic, photographer and more. The upstairs mezzanine area is where a number of people enjoy unique shared office space.



For action-oriented visitors to the Country Park, there are a raft of activities. Those into horses are richly rewarded - there are dressage and showjumping facilities, opportunities to learn to ride and separate areas for horse grazing. During this past winter 2023, the Warkworth and Matakana pony clubs reverted to Matakana Country Club to get their weekly riding dose as their grounds were too wet.

There is a myriad of activities for kids - an awesome playground, mini-train rides, pony rides and carriage rides as well as tractors and "old stuff" to amuse and fascinate young enquiring minds.

The addition of **Action Ninja World** has been very successful, bringing school groups and corporates to the area. There's an obstacle course as well as a flying trapeze, a 4m high-wire, a climbing wall, trampolines and more. A great place for birthday parties for all ages and great for confidence-building and team-bonding too. There's a picnic and BBQ area and plenty of space for the kids to run around. Ample parking too. <https://www.actionninja-world.co.nz/>

Action Matakana - which offers an army confidence course as well as paint ball and archery - is sought after by corporates and groups. Great for team-building and energetic good times together.

Anyone visiting Matakana Country Park will

notice all the memorabilia and quirky stuff around the place, including the big Kiwi and the Reindeer from the old Farmers building. Brendan admits he is always scouting for "new" old stuff and, despite some people suggesting he stops this antic, he knows all too well that visitors love all the old stuff as much as he does and nipping his passion in the bud is highly unlikely.



ST ANDREWS CHURCH

The historic Presbyterian Church on site is distinctive, oh-so-cute and often photographed. It's an ideal venue for weddings and funerals also take place there, the last one being a service for the late John Baker.

WHAT'S ON THIS SUMMER?

A special Christmas Eve Service is held each year. This year it is set for Sunday 24th December 2023 at 6pm. There may also be a second service at 8pm. Look out for signage on the street advising of details. This is a great opportunity to acknowledge Christmas as well as take a peek inside the Church.

If you ever wondered about the Church's history, here's an overview. Constructed mainly of kauri, it was built in Matakana in 1895 and named in honour of the Patron Saint of Mariners. Originally located in Matakana Village a little further along from the Anglican Church, it was shifted to Snell's Beach in the late 1980s where it sat for 20 years until John Baker brought it and relocated it to the Country Park in 2007. More than 300 weddings have been held in this little Church since then, with about 20 pending between October 2023 and March 2024. The Church is managed by a trust of five people and almost all wedding income goes towards maintenance of the building.

It's such a photogenic little building in its rural parklike setting; easy parking too. The Stables nearby is the perfect reception venue (see below). If you're interested in viewing St Andrews Church, with a wedding in mind, contact Neville on 021 189 4242.

MARKETS

Markets were held on site in the early years but were discontinued. They're now back with gusto under the management of Ivana. The leafy rural setting is beautiful but, being outdoor, the markets are weather dependent.

Sunday Markets start up for the season on 8th October 2023 and will run through until Kings Birthday weekend 2024. The Market is open every Sunday from 8:30am to 1pm - dependent on the weather. With dozens of stalls offering all sorts of produce and products, food trucks, face painting and other activities, it is the place to go on a Sunday morning during the summer season. Sometimes there are circus performers and a car boot sale is planned at some point.

Saturday Night Markets operate once a month on the last Saturday of the month (5-9pm), also running from October until Kings Birthday Weekend, and also weather dependent. There is a focus on entertainment and food. Get along!

Market organiser Ivana is always looking for produce and ideas so get in touch if you're

a local grower or have a suggestion. Phone Ivana 021 118 0407.

Keep an eye on the Facebook page which is regularly updated with news and information.

<https://www.facebook.com/countryparkmarket/>

EATING OPTIONS

There are several excellent eateries with the Park.

• **Bramble - Espresso Shop & Honest Canteen:** Offering superb coffee and a range of wonderful food from both cabinet and menu for a delicious breakfast or brunch.

- Open from 6am.

- <https://www.facebook.com/BrambleMatakana/>

• **Smiths - Drinking, Dining, Live Music:** The setting is a harmonious mix of industrial and the laid-back essence of 1960s Kiwi bach life with an international fusion of flavours, crafted to be shared. The perfect balance between relaxed and lively. Rural charm meets urban energy. Live music and DJs on certain days. The expansive deck is sheltered from the elements if the weather isn't great or provides open-air charm if it is. Private spaces available.

- Open Tues-Fri 4pm-late; Sat/Sun 11am-late. Closed Mondays.

- <https://www.smithsmatakana.co.nz>

• **The Stables - Event Venue:** A world of rustic charm and natural beauty, where the rolling hills and tranquil Secret Garden provide the perfect backdrop to make every event extra special. A versatile venue for any event with excellent food. Plan your private function or wedding here.

- The restaurant opens for special pop-up dining events featuring cuisine from India, Italy, France and the Middle East, with live entertainment. Highly recommended! Keep an eye on the website for the latest info.

- <https://stablesmatakana.co.nz>

• **Great FOOD - Food and Beverage Delivery:** Order online and Great FOOD will take care of preparing and delivering fresh, hot and ready-to-eat meals to your door. A great local service for those times when you're not in the mood for cooking. Closed Mondays.

- <https://greatfood.co.nz>

CONCERTS

Matakana Country Park is synonymous with concerts and events and there are several planned for this coming summer season.

- Wednesday 27th December 2023: "Hidden Valley" (Wilkinson, Hedex, Channel Tres, Goddard, Hamdi, Kettama, 33 Below, Taylah Elaine, Sin, Elipsa and more), 3-11pm.

- Tuesday 2nd January 2024: "A Summer's Day Live" (Featuring Dire Straits Legacy Tour, Hello Sailor, Nazareth - the first concert for this lineup for the season), 4-10pm.

- Saturday 3rd February 2024 (Waitangi weekend): "Summer Classic" (for the younger gen!)

- Easter Weekend: A Seafood and Wine event.

ACTIVITIES FOR ALL

A number of exciting plans for the 2023-24 season include a Mechanical Bull for people to have a bit of fun with as well as lasso ropes so people can learn the art of lassoing. Longer term plans include building a Childcare Facility, a Cheese Factory and a BMX circuit, along with some other exciting initiatives that are sure to appeal.

Brendan and Kim's premise for Matakana Country Park is simple - "accessible, affordable family fun". It's fair to say, with its food, farm friends, retail and wellness offerings for all ages, the place delivers this and more. It's a thriving community hub that continues to go from strength to strength. We are very privileged to have such a unique environment in our midst.

Ed's Note: I've watched the Matakana Country Park grow through the years and it's such a fantastic and versatile facility right on our doorstep. I get my hair cut at Lady Barber, enjoy coffee at Bramble, had a brilliant night at The Stables "Soiree" evening earlier in the year and frequent Smiths often. I love the markets, enjoy browsing the gallery and watching the horses. I have tickets for "A Summer's Day Live" which I'll be attending with guests from the UK. I'm not sure I'll be trapezing or hopping on a mechanical bull, although I sure would if I was younger. Learning to lasso could be on the cards. If you haven't explored the nooks and crannies of the Park, head along this summer and enjoy all that it offers.

WHAT'S ON THIS SUMMER?



SCULPTUREUM - ART, GARDENS, FOOD, WINE, EVENTS AND MORE

ABOUT

Situated in beautiful Matakana, Sculptureum is a creative playground spanning over 1.5km made up of four unique garden areas, each with an engaging mix of local and international works. The six indoor galleries are home to the best collection of international art in the Southern Hemisphere.

Rothko/Sculptureum Package: Spend the day exploring the Galleries and Gardens and enjoy lunch at Rothko Restaurant with the special Rothko / Sculptureum lunch package. Available Monday - Sunday, pre-bookings are essential. **Adults \$82pp. Children (up to 12 years of age) \$32pp**

Christmas Package: Gather your friends, family or workmates to celebrate Christmas at the end of 2023. Available weekdays only between 1-24 December. Minimum booking size 6 people. **Christmas Package \$99pp: including Entry into Gardens & Galleries, Glass of Prosecco on arrival, 3 course Christmas inspired lunch in Rothko**

New Years Eve at ROTHKO: Book in for a spectacular dining event at Rothko to ring in the New Year! **Sunday 31st December 2023: 6pm - 12.30am**

Enjoy a cocktail and canapes on arrival, a special menu celebrating dishes featuring Land and Sea produce designed by Sculptureum's Executive Chef Josh Hazel, after dinner take a stroll through the Galleries and Rear Gardens to discover works of art from local and international artists and the gardens lit up to enjoy the art in a whole new light. Wrap up the night with a glass of champagne at midnight and if you wish to, join the dancing at Freddie's, open until 12:30am.

www.sculptureum.nz/whatson/new-years-eve-at-rothko



New Years Eve at FREDDIES: Enjoy a classic summer evening at Freddie's to celebrate the New Year! **Sunday 31 December: 6pm - 12.30am**

Grab your family and friends and bring your outdoor seating for a classic summer evening. **Adults \$29pp. Children (up to 12 years of age) \$15pp. Children under 6 years old are FREE**

Ticket includes House beverage on arrival / Lawn games / Entry into Galleries and Rear gardens with Lighting display (entry from 9.30pm) / Live music performances / Picnic boxes available to pre-purchase

www.sculptureum.nz/whatson/new-years-eve-at-freddies

ESCAPE TO A WORLD OF CREATIVE WONDER at SCULPTUREUM www.sculptureum.nz



SUMMER EVENTS & ACTIVITIES 2023/2024

Matakana Christmas Night Market - Saturday 23rd December 2023, 5.00pm - 9.00pm

Matakana Country Park, 1151 Leigh Road, Matakana (every last Saturday of the month through summer).

Food stalls, food trucks, craft stalls, activities for the kids and ... Santa will be coming too!

Christmas Carols at St Andrews Church - Sunday 24th December 2023 at 6pm.

Matakana Country Park, 1151 Leigh Road, Matakana

An opportunity to acknowledge the festive season and get your vocal chords active. There may be a second service at 8pm. Check signage on the street for details.

Hidden Valley Festival - Wednesday 27th December 2023, 3.00pm - 11.00pm (R18)

Matakana Country Park, 1151 Leigh Road, Matakana

Featuring International artists: Wilkinson, Channel Tre, Hedex, Goddard, Hamdi, Kettama - and a range of local artists too. Tickets www.ticketfair.com

The Great Summer Art Exhibition - Saturday 30th December 2023 to Monday 1st January 2024, Open 10am - 4.00pm daily

(Prizegiving and Preview Evening on Friday 29th December at 7pm, tickets available for purchase).

Mahurangi East Community Hall, 21 Hamatana Road, Snells Beach. Hosted by the Mahurangi East Tennis Club, for the 30th consecutive year, a host of artworks will be

on display for sale, including photography. Well worth a look!

www.mahutennis.co.nz/art-expo

NYE at Sculptureum - Sunday 31st December 2023 - at ROTHKO or Freddie's (see above).

Highlife NYE Festival - Sunday 31st December 2023, 3.00pm - 1.00am Monday 1st January 2024

Highlife Entertainment is returning to the Ascension Wine Estate with a boutique, Ibiza-style experience for New Year. Expect music from world class DJs, dancers, food and beverage and a fireworks display.

Expect music from world class DJs and entertainers, dancers, gourmet food, and premium beverages ... plus a fireworks display to welcome the New Year in style. <https://highlifeny.co.nz/>

Connected 2024 – NYE Bash @ Leigh Sawmill Café – Sunday 31st

December 2023. Doors open at 8pm, music at 9pm, close at 2am Monday 1st January 2024 (strictly 18+ event)

142 Pakiri Road, Leigh

A Festival in one night! Expect a high-energy night of the best Jungle, Old Skool, and Drum and Bass Auckland has to offer, including DJ Mac Summer, Carlie Starr, Riley Alj and many more.

Tickets - www.leighsawmill.co.nz

Warkworth Rodeo – Monday 1st January 2024

Warkworth Showgrounds, SH1

Traditional Rodeo events (barrel racing, steer riding, breakaway roping).

“A Summer’s Day” – Dire Strait Legacy Tour – Tuesday 2nd January 2024, 4:30pm to 10:00pm

Matakana Country Park, 1151 Leigh Road, Matakana

The “A Summer’s Day Live” Tour kicks off

January 2023 with a few of your favourite acts: Dire Straits Legacy (many of the original musicians perform all the classics), Scottish rock act Nazareth (first time in NZ); and Hello Sailor (always fabulous).

Food Truck Collective @ Omaha – Saturday 6th January 2024, 5.00pm – 9.00pm

William Fraser Reserve, 37 Broadlands Drive, Omaha

The Food Trucks are heading to Omaha, with an amazing selection of street food, drinks, wine, music and entertainment, plus a pop-up craft beer bar. Dogs are welcome on a lead but this is not a BYOB event.

<https://foodtruckcollective.co.nz>

The Big Summer Comedy Tour – Thursday 11th January 2024, doors open 6.45pm, comedy show starts 7.30pm

Stables, Matakana Country Park

An evening of laughter, hosted by Brendhan Lovegrove, joined by Ben Hurley and Courney Dawson. Sure to be a Kiwi cracker of a show!

<https://stablesmatakana.co.nz/ouevents>

“Summer Classic” – Saturday 3rd February 2024 – Waitangi Weekend (R18)

Matakana Country Park, 1151 Leigh Road, Matakana

For the 10th year running, Matakana will again host one of Summer Classic’s biggest line ups. A mainstay of the Kiwi summer festival experience!

www.ticketfairly.com/event/summerclassic23

Warkworth A&P Show – Saturday 16th March 2024, 9am–5pm

Warkworth Showgrounds, SH1

All your favourite A&P Show events including wood shopping, sheep shearing, cattle, miniature horses, donkeys, mules, mounted games and more. Kapa haka, pipe band, dog displays. Baked goods, craft and produce plus creations from the kids. And a truck show too.

LOCAL DELIGHTS

There are so many fabulous products and services in the local area. We want all these local businesses to thrive, survive and stay alive and encourage you to buy and try them! Be loyal and shop local – you won’t be disappointed.

MARKETS

There are four excellent markets in Matakana, each one unique.

The Matakana Village Farmers’ Market – Open every Saturday between 8am – 1pm (rain, hail, or shine) 2 Matakana Valley Road, Matakana

From award-winning coffee to mouth-watering brunch dishes, there’s plenty to sample and savour. Relax by the riverside listening to live local music. Also check out the offerings at the old Creamery above www.matakanavillage.co.nz/market

The Matakana Market – Open Saturday 9am – 2pm. At the Old Dairy Factory, 28 Matakana Valley Road, Matakana

Stalls inside and out offering a range of crafts, food, clothing and more. www.thematakanamarket.co.nz

Matakana Country Park Market www.facebook.com/countryparkmarket Matakana Country Park, 1151 Leigh Road, Matakana

Sunday Market – every Sunday 8.30am – 1pm

Shopping for all things local including food and produce, arts and crafts, children’s entertainment, vintage goods, clothes and more.

DATES: 10 & 17 December 2023; 14 & 21 January 2024; 4, 11, 18 February 2024



Saturday Night Market – every last Saturday of the month 5-9pm

Bringing street food and fun to the Matakana Countryside.

DATES: 23 December 2023; 27 January 2024

LOCAL CINEMA

Matakana Cinemas – 2 Matakana Valley Road, Matakana

A boutique, 3-cinema attraction located in the heart of Matakana, playing the latest blockbuster and foreign films. www.matakanacinemas.co.nz

LOCAL CAFÉS, RESTAURANTS, BARS & EATERIES

Omaha Beach Café & Eatery www.omahabeachcafe.nz

1 Matariki Street, Omaha – Our local café by the beach for all sorts of treats.

Estuary Café & Bar www.omahagolf.co.nz/cafe

Omaha Beach Community Centre & Golf Club – Open 7-5pm daily, dinner on Fridays.

The Farmers Daughter <https://thefarmersdaughteromaha.co.nz/menu>

329 Omaha Flats Road, by the causeway on the estuary – Fresh and fabulous.

Smiths & Stables www.smithsmatakana.co.nz

1151 Leigh Road, at the Matakana Country Park – Rural charm meets urban energy – with live music.

Matakana Market Kitchen www.matakanamarketkitchen.co.nz

2 Matakana Valley Road – Relaxed riverside dining.

Jin Jin www.jinjin.co.nz

44 Matakana Valley Road – Modern Asian dining.

Plume Vineyard Restaurant <https://plumerestaurant.co.nz/restaurant>

49A Sharp Road, Matakana – A winery restaurant with seasonal menu.

Viet Q Foods www.facebook.com/vietqfoods.co.nz

969 Matakana Road, opposite the school – Food truck offering authentic Vietnamese food.

The Vintry www.vintry.co.nz

2 Matakana Valley Road, next to the cinemas – Wine centre and lounge bar in the heart of Matakana.

8 Wired Brewing Co <https://8wired.co.nz>

56 Matakana Valley Road – Barrelworks and tap room with award-winning craft beers and good food.

The Matakana Village Pub www.thematakana.co.nz

11 Matakana Valley Road – Lively times in a historic location.

The Sawmill Brewery + Smoko Room www.sawmillbrewery.co.nz

1004 Leigh Road – Independent B Corp certified brewery (first in NZ) offering food, craft beer, wine and more.

Matakana Oysters www.makanaoysters.co.nz

1217 Leigh Road – Fresh local oysters, condiments and more, including a whole load of fun with Tom and the crew at The Green Shed.

Ravish www.ravish-hq.com

7 Sharp Road – Coffee kiosk (7 days) and catering.

Nectar Café at Morris & James www.facebook.com/Nectaratmorrisandjamescafe

48 Tongue Farm Road, Matakana – Cabinet food, hot food, pet friendly, great for kids, and the pottery showroom and shop on site. (Wed-Sun).

LOCAL WINERIES

Brick Bay – The Glasshouse www.brickbay.co.nz

7 Arabella Lane, Snells Beach – Restaurant, tasting and sculpture walk.

Heron’s Flight www.heronflight.co.nz

49 Sharp Road – Matakana’s original cellar door. Great wines with intimate tasting room.

OBV (Omaha Bay Vineyard) <https://omahabay.co.nz>

169 Takatu Road, Matakana – Majestic views, superb hand-crafted wines and tasty platters.

Matakana Estate www.makanaestate.co.nz

568 Matakana Road – Cellar door and luxury lodge.

LOCAL DELIGHTS

Takatu Lodge & Vineyard

www.takatulodge.co.nz/

518 Whitmore Road, Matakana - A hidden hilltop gem offering great wines and luxury stays.

Visit the websites below, for more details of the many Matakana Wineries and tours available in the area.

<https://matakanawine.co.nz>

www.makanacoast.co.nz/listings/vineyards-cellar-doors

BY THE MATAKANA ROUNDABOUT

The Rusty Pelican

www.rustypelican.co.nz

Good friends, good food, good times, with daily specials (Rusty Sportsbar next door with big screens and TAB facilities).



Tramcar Matakana

www.tramcarmatakana.co.nz

Home of burgers, fish & chips, ice cream and all tasty things - dine in or takeaway.

Goose Bakery & Café

www.goosebakery.co.nz

Open Wed-Sun for delicious baked goods.

Ed's note: Try the delicious Chetzels - but leave one for me!

CREATIVE/HOME/GIFTS

Hazel Hunt Furniture and Art

www.hazelhunt.co.nz

1168 Leigh Road - Art, rustic furniture and handpicked homewares and gifts. (Hazel is an immensely talented artist!)

Green with Envy

<https://greenwithenvy.co.nz>

615 Matakana Road - A beautifully curated collection of items (furniture, homewares, linens, gifts) that bring style and simplicity to your home.

Art Matakana www.artmatakana.com

Matakana Country Park - Contemporary fine art gallery showcasing a range of NZ artists, both well-known and emerging.

Artform Gallery

www.artformgallery.co.nz

2 Matakana Valley Road - Stunning handcrafted sculpture, object and wall art.

The Eco Room

www.facebook.com/theecoroom

860 Matakana Road - A small boutique offering eco-friendly, sustainable, kiwi-made and unique products. Online store <https://theecoroommatakana.com/>

Clay Friends www.clayfriends.nz

1 Anderson Road, Matakana - Claymaking space, ceramics store, classes and workshops.

Trio Soy Candles

www.triosoycandles.co.nz

304 Matakana Road - Candles, bodycare and gifts. Open Wed-Sun 10am-4pm

Nomad & Home

<https://nomadandhome.co.nz>

1 Matakariki Street, Omaha - Beach and lifestyle: Homeware, gifts, resort & activewear with an emphasis on natural and organic.

Of Hand & Heart Art Gallery

www.ofhandandheart.com/

Follow the yellow brick road down the short alleyway on Queen Street, Warkworth (beside Pete & Mary's Eatery) to visit Rick and Mio at this amazing gallery - a treasure trove of gorgeous pottery, ceramics, paintings, fibre art, jewellery, silk garments and unique gifts.

BODY/MIND WELLNESS

The Space www.thespacematakana.nz

Experiences that develop self-awareness and mental resilience, balancing our physical body and emotional state.

Bali Garden www.baligarden.nz

A tranquil space in Point Wells offering all things wellness - a special sanctuary for the community and beyond.

YogiFish <https://yogifish.nz>

Offering swimming and yoga adventures - local sand and land outings as well as a range of swimcation/yoga escapes.

Oasis Wellness Collective

www.oasiswellness.nz

A holistic approach to self-care through bodywork, yoga, breathwork, meditation and workshops.

Matakana Botanicals

<https://makanabotanicals.co.nz>

Matakana Botanicals (originally Les Floralties) offers high-quality skincare products inspired by the natural resources of the Matakana region from its eco base on Leigh Road, and online. Also a function venue.

Nourished Leaf www.nourishedleaf.com

Reiki energy Healing, Intuitive Massage, Holistic Facials, Sacred Space Holding

Matakana Village Books

www.makanavillagebooks.co.nz



If you just want to relax at your place with a good book, visit Matakana Village Books for your summer beach reads - here's a selection of some new releases which will be perfect for reading and relaxing with this summer. Pick up a copy of their free Summer Reading Guide which includes these and many more books for adults and children and inspiration for your Christmas shopping. Open seven days and online.

ROADSIDE STALLS

There are many roadside stalls in the area offering fresh seasonal produce and local goodies, with the old-fashioned honesty system in play. Some now have Eftpos facilities and online banking as payment options, although some still rely on you dropping cash into the slot!

Avocados, strawberries, fruit, veges, citrus, greens, flowers, herbs, plants ... you name it, if it grows and it's in season, you're bound to find it on the roadside. Do stop by and take a look.

SOMETHING FOR EVERYONE

Whilst we really don't need to venture very far from Omaha Beach as we have all our summer needs on our doorstep, there are many unique and fabulous places selling all sorts of homewares, fashion, art, jewellery, shops, recycled goods, supplies, products and services in and around Matakana Village and beyond. Not a mall in sight - just passionate people selling wonderful stuff!

The Knitting Truck; Village Picnic; Old School Inc; oob organic; Matakana Berry Co (Gala Berry); Charlies Gelato; Morris & James; River Nile Linens; About Time (Pt Wells), Coconut Gallery ... and more.

Neowork - a new way of working

Check out Neowork, a new service connecting the community to get things done. You can join up to either find work or post a job you need someone to do for you - any job, anywhere, any time. It's a new way of working, set up by brothers Rob & James McPhail - try it out! www.neowork.co.nz

We're so lucky to have so much in our midst, on top of our beautiful beach and tranquil environment.

SUPPORT LOCAL!!

Got a task you need done?

Post a job & hire talent.

neowork.co.nz

neowork



MATAKANA VILLAGE
The Heart of Matakana

Find lots more info here about Matakana Village

www.makanavillage.co.nz

The Matakana Coast Information Centre in the foyer of the Matakana Cinemas complex has a stack of brochures about everything on offer in the area and, often, passionate volunteers on hand to share info.

www.makanacoast.co.nz

Download "The Matakana App" for the latest info on what's on.

Check out the Made in Matakana Facebook page for more goods and services <https://www.facebook.com/groups/597530070863638>

OBC DATABASE - ARE YOUR CONTACT DETAILS UP TO DATE?

Anyone who has worked with a database will know how difficult they are to keep up to date. At OBC we're no different. But having accurate contact information for our members and residents is really important; it enables us to keep you informed of issues that impact our community, seek your input from time to time and, yes, to accurately invoice annual membership subscriptions for those of you that aren't covered by the OBRS levy for residents at the southern end.

Also, if something goes wrong when you're not at your Omaha property, we'd like to be able to get hold of you if need be. But if we don't have your full and correct contact details, we can't do that!

So, if you've recently moved into the area or your email or postal address has changed in the last 18 months, we'd really appreciate it if you could send us an email with your updated contact details.

us@omahabeach.co.nz

Now's the time to get in touch and make sure we do have the correct information. It will be helpful to stipulate which address you prefer to have the Newsletter sent to.

- Name
- Omaha Beach address
- Home address if not a permanent Omaha resident
- Postal address for Newsletter (make sure there is a letterbox if in Omaha)
- Email address
- Phone number(s)

Ensuring your records are up to date will mean you won't miss out on important information about issues regarding Omaha and our community - and it will be much appreciated at our end.

We love keeping you informed - please keep us informed!



YOUR BEACHSIDE GROCER

See you at The Superette!

4/1 MATARIKI ST, OMAHA BEACH
@THESUPERETTE_

EDITOR'S NOTE

As is evident from the content within, the weather has sadly been star of show this year – and not because it was fabulous.

In last year's OBC Newsletter I shared the tale of my near drowning incident in Omaha waters. Serendipity and resilience ensured I got back to shore safely that day, nevertheless it was a harrowing experience to get to grips with. This year, I ventured back to the water (by Walkway 10) at the exact time and date of my ordeal one year prior – 18th January, 2:30pm. It was a beautiful blue sky Omaha beach day, the tide was reasonably high, the waves were moderate and the water warm. It was a great swim and also a cathartic experience. Still, one must never underestimate the power of those waves ...

After my swim I sat on the beach, contemplating life, when I noticed an older couple strolling happily to the water's edge. Next minute, the man was bowled over in the shallows. He tried to get up; he couldn't. His wife tried to get him up; she couldn't. The waves kept coming, engulfing him, swallowing him, right there in the shallows in front of me and it only took me a moment to understand that they were in trouble. I ran to them, as did a guy walking along the beach, and we helped the chap to his feet. This all happened so swiftly and they were, understandably, taken by surprise and very shaken. I talked to them awhile, sharing with them the reason for my swim at that very time/date and empathising with their frightening moment as the waves showed off their invisible power.

And so, a year to the hour after someone helped me when I was in difficulty in the water, I paid it forward by helping others. The Surf Club lifeguards do a wonderful job keeping an eye on things, but individual vigilance wherever you are on the beach is always a good idea.



I was going through some old Omaha brochures and paraphernalia the other day and came across a Mahurangi Matters edition dated 18th December 2013. Ten years ago Len Brown was Mayor and Hill Street fury was a headline, along with court battles over Te Arai. Otherwise, it was largely uncontroversial stuff. At least the Hill Street hell is over, with the new road opening on 16th June 2023. However, Te Arai is still in the news, with the front page article of the 6th November 2023 edition of MM talking about the controversial closure of beach access from Pakiri to Te Arai to keep people off private land. Shame, as it's a beautiful piece of coastline, although do note that the DOC area south of the river at Pakiri will still be accessible for the public and the beach will be patrolled over summer.

The new road is indeed a life-changer. I've done dozens of trips back and forth to Auckland over the past year and it is wonderful to now have a safe, straight-forward drive rather than negotiating the tired and twisty old road, especially at night. AT has shared plans for improving the Hill Street intersection, including installing two roundabouts, which will also make a big difference when visiting Warkworth. The proposal is under public consultation until 17th December.

I also came across a colourful sales brochure, undated but presumably of the 1970s era. It twice mentions "just 1½ hours from Auckland".

Several decades later decent progress has been made with one-third shaved off the drive time! Unless, of course, you have to battle the Auckland congestion (peak hour is any hour) or you've been caught up in the shemozzle of the installation of the new point-to-point speed cameras along Matakana Road. Testing is set to start in December for approximately three months before being switched to "enforcement mode" on 1st March 2024. I don't know about you but I rarely get above 60-70kph, let alone near the 80kph speed limit, as people don't generally hurtle along that road. Most aren't in a hurry and the state of the road surface doesn't exactly beckon speeding. It will be interesting to learn if these cameras generate better road safety along what I've always thought is a pretty safe road anyway. I do wonder how much revenue they'll generate given the general – mostly leisurely – speed of travel on the road. The money would have been better spent fixing up the shambles that is Omaha Flats Road!

Throughout the year I've enjoyed observing this ever-changing area continue to evolve

EDITOR'S NOTE

and flourish. Fifty years on, I've become even more immersed in the local community and I love meeting locals when out and about. As a horseracing enthusiast, I enjoy Saturday afternoons with the crew at the Rusty Sportsbar. As a keen quizzier, I've been putting my braincells to the test at 8 Wired's quiz nights. As someone who relishes home base when not away travelling, I've appreciated the convenience of popping to the Superette to top up supplies. As a lover of food, wine, music and socialising, sampling local fare and sounds with friends is always a treat. And as a budding veggie gardener, I'm learning about how to grow what when, with tips and assistance from neighbours – and some hilarious-looking carrots, prolific spinach, lettuce and cherry tomatoes plus a perfect broccoli specimen amongst my harvests. I thank all those who add a dose of happy simplicity to my world. Actually, veggie gardening isn't all that simple and, given the coastal environment, often a battle of the elements and insects! But it's so wonderful to "grow your own".

I love walking along Omaha Beach; it is very grounding and always generates inspiration and creative thoughts. As a tour leader and travel companion, I'm fortunate to travel regularly and therefore get to discover other beaches, coves and coastal delights around the world. Australia has been a focus this past year, including city stays, rural experiences, train trips and river cruises. Being on a river is such a tranquil experience and, whilst there's no surf or sea/sky blending on the horizon, riverside vistas are often breathtaking, especially on the Mighty Murray.



Proud Mary moored on the Murray River, South Australia, under a Full Moon



Refuge Bay, Hawkesbury River, NSW, Australia

Norfolk Island is a fabulous and underrated tiny dot of an island in the Pacific, with stunning natural beauty and a rich and brutal history. I refer to it as "SuperNatural" and it has impressed me since my first visit back in 2000. The Emily Bay lagoon is perfect for a peaceful swim before a delicious seafood dinner and glorious sunset.



Emily Bay, Norfolk Island

Adelaide is an attractive, well-planned, easy city to visit, a foodie's paradise and wine lover's heaven. The beachside suburb of Glenelg is an ideal place to stay; spectacular sunsets with a resort feel, and an easy tram ride into town.



Sunset at Glenelg Beach, Adelaide, South Australia

It's certainly been a challenging year in a raft of ways and I, for one, won't be unhappy to see it come to a close. I'm looking forward to welcoming friends from the UK for Christmas/New Year; they know Omaha well and were last here just before lockdown. It will be interesting to get their perspective on a changed NZ.

Thanks, as always, to Chris and my fellow OBC Committee members, for all they do. Special thanks to Paul Head and Rob Zubielevitch for assistance with preparation and production of this year's edition of the Newsletter, and to all for review. Paul also organised the new sign on the entrance roundabout which gives a clear, fresh, welcoming feel upon arrival. I hope you find this an informative and enjoyable summer read.

Wishing everyone a very Merry Christmas 2023 and Happy New Year! Here's hoping 2024 brings stable weather, uplifted spirits and good things to all – including, perhaps, some travel. I have eyes on Europe – maybe come join me on a BEYOND trip!

I'll be leading a special trip to Morocco for Pukekohe Travel in April 2024. An amazing country, and the beach at Essaouira is quite something. Limited spaces left. Contact me to find out more!

Sally Blyth (Editor)
sally@beyondlimits.co.nz
Ph: 021 480 323
www.beyondlimits.co.nz

Special thanks to:

everyone who has contributed to this Summer 2023/2024 edition (with special acknowledgement to Paul Head for streamlined coordination); all contributing photographers; our "family" of regular advertisers whose support helps us bring you this Omaha Newsletter – and a big welcome to new advertisers.

SECURITY: For local assistance at any time, dial INSITE SECURITY 09-425 7113
Omaha has 24-hour security patrol from 1st December 2023 to 31st January 2024, and long weekends
Thanks to the Insite Team for working to keep us safe!

SO THAT WE CAN KEEP IN TOUCH PLEASE ENSURE WE HAVE YOUR EMAIL ADDRESS AND ANY UPDATED ADDRESS/CONTACT INFORMATION EMAIL us@omahabeach.co.nz

BEYOND
 Travel Companion Services

no limits, new horizons

SALLY BLYTH
 Phone 021 480 323
sally@beyondlimits.co.nz
www.beyondlimits.co.nz



Come travelling with BEYOND in 2024
 Personal support and companionship - taking you safely wherever you wish to go.
 Bespoke small group trips with a gentle and relaxed approach.

Let's make it happen!

MEYER

